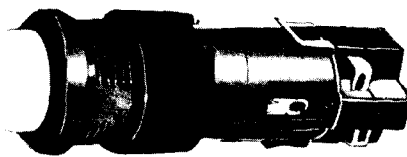


83500 Series SWITCHES

Adapt-a-Switch

ARROW

- Snap on contact blocks
- Momentary or alternate switch actions
- Non illuminated and indicator types available



The arrow adapt-a-switch offers from a small number of component parts the maximum in design flexibility.

TECHNICAL DATA

Electrical Ratings (0.75 P.F.) 5A 125V a.c.
2A 250V a.c.
5A 28V d.c.

Dielectric Strength: 1000V r.m.s. at sea level for one minute.

Mechanical Life: A minimum of 100,000 cycles

Electrical Life: A minimum of 100,000 cycles at full rating.

Lamps

T1 ¼ groove base incandescent in 6 volts (type 337/774)
14 volts (type 336/782) and 28 volts (type 334/787)



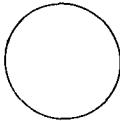
How to Order

Example			
Required	Round Green Lens	Round Lighted Momentary Contact Switch	3 Pole Form Z Contacts
Parts	1 pc. 83500-92	1pc. 83503	3 pcs. 83500-30
Order Reads	1 pc. — 83500-92 round green lens 1 pc. — 83503 round actuator-indicator momentary action 3 pcs. — 83500-30 standard duty contact blocks		

Actuator Indicator (includes Mounting Nut)	Type
Rectangular	Momentary Action 83501
	Alternate Action 83504
Square	Momentary Action 83502
	Alternate Action 83505
Round	Momentary Action 83503
	Alternate Action 83506

Contact Blocks	Type
One normally open & One normally closed	Standard Duty 83500-30 Low Energy, Gold Plated 83600-30

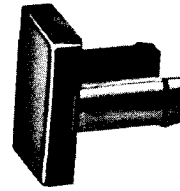
Optional Features	Type
Snap-on clip to convert any actuator to indicator	83500-51

Lens Unit	Colour	Type
Rectangular 	White	83500-70
	Red	83500-71
	Green	83500-72
	Blue	83500-73
	Yellow	83500-74
	Amber	83500-75
Square 	White	83500-80
	Red	83500-81
	Green	83500-82
	Blue	83500-83
	Yellow	83500-84
	Amber	83500-85
Round 	White	83500-90
	Red	83500-91
	Green	83500-92
	Blue	83500-93
	Yellow	83500-94
	Amber	83500-95
	Black	83500-96

Indicator (without lens)	Type
Rectangular Lamps not included	83507
Square Lamps not included	83508
Round Lamps not included	83509

Manufactured in U.S.A.

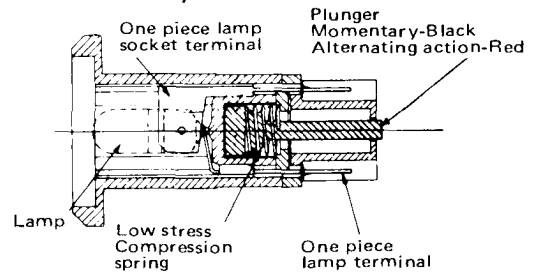
- Three lens shapes, seven colours
- Front access to lamp
- Mar-resistant lenses with uniform luminosity



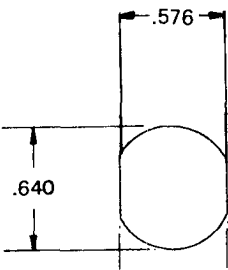
Mounting Data & Outline Drawings

The adapt-a-switch is designed for rapid, efficient and neat installation. Single hole mounting through the panel face allows the unit to slip through from the front and the moulded nylon mounting nut is threaded on the unit housing from the back of the panel. Panel thickness may be up to 1/4". The bezel extends a minimum of .035" beyond the edge of the mounting hole in the panel allowing for normal tolerance in punching the mounting hole.

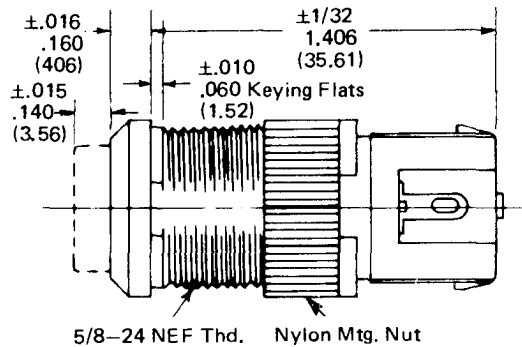
Cut Away View



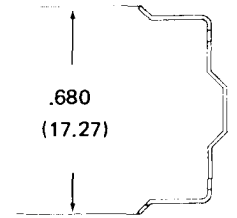
Panel Cut-out



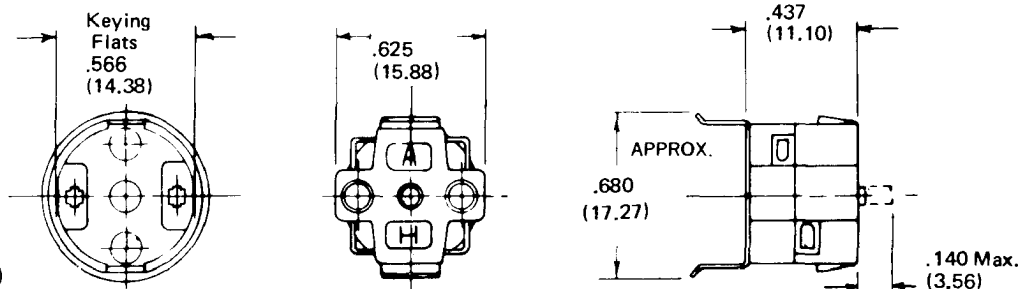
Actuator-Indicator



Snap on Clip

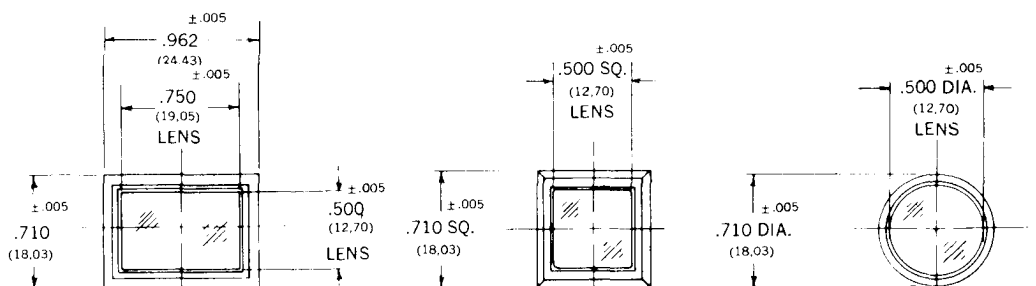


Contact Block



Dimensions in ins. and (mm)

Bezels with Lenses



Manufactured in U.S.A.