

Specialty Fuse

Time-Delay, Rejection Style

GMQ & HLQ



Catalog Symbol: GMQ (Fuse) HLQ (Fuseholder)

Time-Delay

Rejection Style Fuse

Ampere Rating: 1/2™ to 60 Amperes

Voltage Rating: 300 Volts AC or less

Interrupting Rating: 10,000 Amperes

Agency Information:

Fuse:

UL Listed, Guide JDYX, File E19180

CSA Certified, Class 1422-01, File 53787

Fuseholder:

UL Recognized, Guide IZLT2, File E14853

CSA Certified, Class 6225-01, File 47235

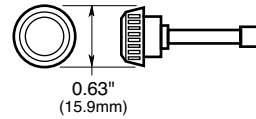
Electrical Ratings for Type GMQ Fuses and Rejection Style Carriers

Fuse	Carrier	Fuse	Carrier
GMQ-1/2	HLQ-1/2	GMQ-2 1/2	HLQ-3 3/10
GMQ-3/10	HLQ-1 1/10	GMQ-3	HLQ-3 3/10
GMQ-5/10	HLQ-1 1/10	GMQ-3 3/10	HLQ-3 3/10
GMQ-1	HLQ-1 1/10	GMQ-4	HLQ-5
GMQ-1 1/4	HLQ-1 1/10	GMQ-5	HLQ-5
GMQ-1 3/10	HLQ-1 1/10	GMQ-6 1/4	HLQ-8
GMQ-2	HLQ-3 3/10	—	—

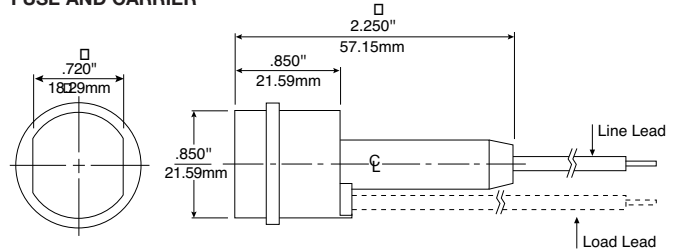
CE logo denotes compliance with European Union Low Voltage Directive (50-1000 Vac, 75-1500 Vdc). Refer to Data Sheet: 8002 or contact Bussmann Application Engineering at 636-527-1270 for more information.

Dimensional Data

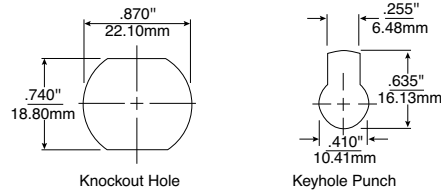
FUSE



FUSE AND CARRIER



MOUNTING HOLE



General Information:

- GMQ fuse mounts in type HLQ size rejection (size limiting) carrier (prevents overfusing).
- HLQ carrier comes with 6" of #18 red insulated solid copper wire attached to the line side.
- Customer inserts a #18 insulated solid copper wire into load side receptacle.
- Size of type GMQ fuses varies with ampere ratings.
- Fuse and knob are an integral one-piece unit. There are no replacement knobs (caps).
- Units can be panel mounted with a separate steel clip. For the knockout hole (see above), choose #BK/A-104. For the keyhole punch type hole, choose #6374 for panels .043" to .062" thick, or #4909 for panels .030" to .042" thick.
- Do not put tension on line (rear) terminal of fuseholder.