

BIAS OSCILLATOR TRANSFORMERS

NORTRONICS

TO DRIVE RECORD AND ERASE HEADS

- Heavy-duty Ferrite E-core construction assures minimum external magnetic field.
- High efficiency, high Q, clean waveform, and good voltage regulation.
- Wide frequency and voltage range.
- Output voltage at secondary of transformer may be varied by adjustment of the D.C. power supply voltage to the oscillator.
- Power handling up to 3 watts.

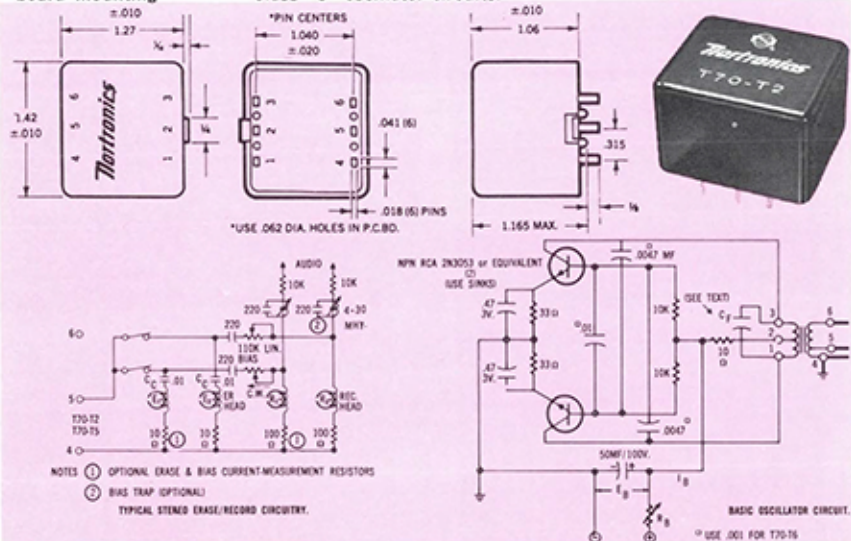
Model Number	Circuit Type and Mount	Application	Typical Operating Frequency (KHz)	Secondary Voltage (RMS)	Compatible Nortronics Heads
T70-T2	Transistor, PC Board	General Purpose	50-120	40, 80, 120	No. 4 & No. 1 Erase
T60-T2	Transistor, Can & Lug	General Purpose	60-110	40, 80, 120	No. 4 & No. 1 Erase
T70-T6	Transistor, PC Board	Duplicating	230-500	70	Drives 10 No. 8R Record
T60-T6	Transistor, Can & Lug	Duplicating	230-500	70	Drives 10 No. 8R Record
T70-T5	Transistor, PC Board	Professional	150-200	—	PR Series Erase
T60-E	Vacuum Tube, Can & Lug	General Purpose	40-70	7 & 120	No. 2 & No. 1 Erase
T60-F	Vacuum Tube, Can & Lug	General Purpose	60-100	60 & 150	No. 4 & No. 1 Erase

Table and circuit list the various methods of operation for the T70-T2 oscillator circuit, to obtain power for Nortronics #4 erase heads, at three different frequencies.

T-70 SERIES

for printed circuit board circuit

- Pin terminals provide for plug-in and soldering
- Nylon case measures 1 1/4" x 1 1/2" x 1 1/8"
- May be used with standard transistor push-pull or single-ended Class "C" oscillator circuits.



T70-T2 ERASE OPERATION

Frequency ER. V. RMS	EB D.C. Volts	SEC. Taps	CC MF.
60 KHZ.	20 V.	4 - 5*	.01
40 V.A.C.	15 V.	4 - 5	.002
	10 V.	5 - 6	.01
80 KHZ.	25 V.	4 - 5*	.01
50 V.A.C.	20 V.	4 - 5	.002
	13 V.	5 - 6	.01
100 KHZ.	30 V.	4 - 5*	.0047
60 V.A.C.	25 V.	4 - 5	.002
	18 V.	5 - 6	.0047

* Preferred

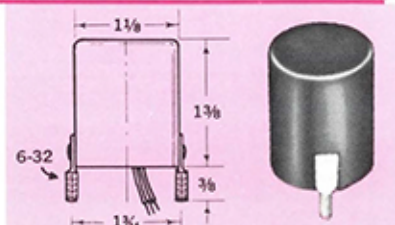
PARAMETER TABLE

	T70-T2	T70-T5	T70-T6
Pri. Induct. (1-3)	130 UHY.	60 UHY.	18 UHY.
Pri. D.C. Res. (1-3) Ohms	0.35	0.2	0.06
Sec. D.C. Res. (4-6) Ohms	15	0.3	0.22
Turns Ratio (1-3):(4-5)	1:15	1:0.5	—
Turns Ratio (1-3):(5-6)	1:3	1:1	—
Turns Ratio (1-3):(4-6)	1:45	1:15	1:1.67
*Out Volts (4-5)	40 V.	12 V.	—
*Out Volts (5-6)	80 V.	24 V.	—
*Out Volts (4-6)	120 V.	36 V.	50 V.
Tun. Cap. CF (60 KHZ.)	.047	—	—
Tun. Cap. CF (100 KHZ.)	.015	.038	—
Tun. Cap. CF (150 KHZ.)	—	.016	—
Tun. Cap. CF (250 KHZ.)	—	.0047	.033
Tun. Cap. CF (500 KHZ.)	—	—	.0075

*No Load RMS Oscillator Voltages with 20 Volt D.C. Supply Output Voltage is Directly Proportional to D.C. Supply Voltage at Transformer Center Tap.

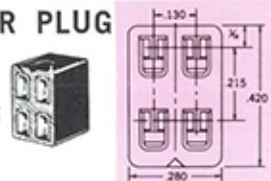
T-60 SERIES for chassis mounting

- Color coded leads, anodized aluminum case (1 1/8" diameter, 1 3/8" high)
- Two 6-32 x 3/8" spade lugs
- Units for transistor and vacuum tube applications



CONNECTOR PLUG

MODEL 105-20



4-Pin Black Phenolic Plugs permit instant connection to all 4 pins of Stereo Heads and 2 pins of Mono Heads. 105-20 plug is for all Nortronics heads except BQQ, P-B3Q and P-BQL.

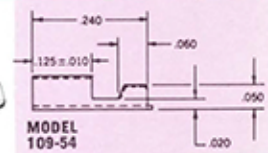
PLUG & CABLE ASSEMBLY

MODELS 139-70



Assemblies ready to plug onto Head Terminal Pins. Consist of proper plug and two shielded cables (nominal length 18" each). 139-70 is used with all Nortronics stereo heads, with cable pairs connected to the upper pair of pins and lower pair of pins. 139-77 is used with Nortronics mono-combo and certain cassette heads, with cable pairs connected to the right pair of pins and left pair of pins.

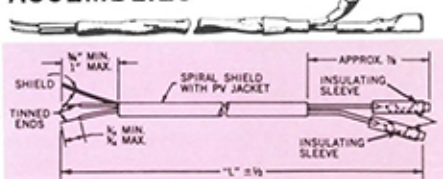
PIN CLIPS



The 109-54 is a gold plated beryllium copper push-on clip formed to fit the terminal pins of all Nortronics heads. Lead wires may be soldered easily to the small end of the clip, leaving the larger end open to push on to the terminal pins. Pin clips permit ready attachment or removal of leads to terminals of heads, and also eliminate damage to head caused by soldering leads directly to pins.

PIN CLIP & CABLE ASSEMBLIES

139 SERIES



Provided to make neat and simple electrical connections to the terminal pins of Nortronics heads. Two conductor (No. 26) shielded wire insulated with vinyl jacket, with 109-54 pin clips. Available in 2 lengths, 4 color combinations:

	9 inch	24-inch
Red-Orange	139-55	139-78
Yellow-Blue	139-56	139-79
White-Black	139-57	139-80
Green-Brown	139-58	139-81