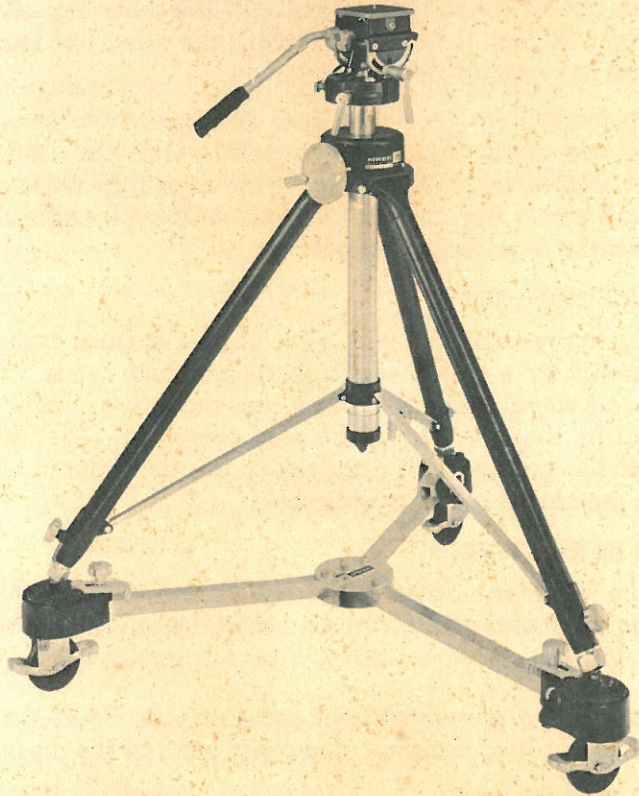

QUICK-SET HERCULES-GIBRALTAR EQUIPMENT

INSTRUCTION MANUAL INDUSTRIAL TRIPODS



GUARANTEE

Within a year after purchase, any repairs necessary to Quick-Set Industrial Tripod Equipment, due to a defect in materials or workmanship, will be made (or, at our option, equipment will be replaced) without charge. No other warranty or guarantee, express or implied shall be applicable to this equipment. Nor are we responsible for other expenses or inconveniences, or for any consequential damages occasioned by the equipment.

Repairs made necessary by reason of accident, misuse, or normal wear, will be charged for at our standard rates.

INSTRUMENT-
POSITIONING
EQUIPMENT

QUICK-SET

INCORPORATED



3650 WOODHEAD DRIVE NORTHBROOK, ILL. 60062 PHONE (312) 498-0700

THE TRIPOD

Tripods have telescoping tubular legs. The leg joint includes a ring brake, which holds the lower section at the desired extension and eliminates shake. Non-metallic bushings in the joints insure smooth sliding and guard against wear.

SETTING UP THE TRIPOD

Lay the tripod horizontal while the legs are being extended. Loosen the Leg Lock Screw on one of the leg joints, pull out the inner leg, and tighten the Leg Lock Screw. Repeat this operation with the other two legs, being careful to extend all legs exactly the same amount.

Now stand the tripod on the Foot Plates and loosen the Strut Yoke Lock Screw. Grasp two of the legs above the joints, with the third leg pointing out in front. Raise the rear legs slightly, at the same time pulling out and up. The legs will all swing out together, and when they are spread the desired amount, tighten the Strut Yoke Lock Screw.

ELEVATOR MECHANISM

The Column, a heavy-wall tube with rack teeth machined from the solid, is raised and lowered by a pinion which meshes with the rack. The pinion is driven by a hand wheel through a worm-gear reduction. Ball-bearings carry the thrust load on the worm to insure easy operation. The Column is guided by non-metallic bushings. A ring brake holds the Column securely at the desired height, and locks it against side shake.

OPERATING ELEVATOR

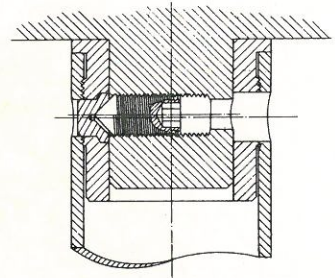
To operate the Elevator, loosen the Brake Screw, turn the hand wheel to raise the Column the desired amount, and then tighten the Brake Screw.

CAUTION

Don't raise or lower Column without loosening the Brake Screw, to avoid damage to the Brake Ring, Column, and other parts of the mechanism.

ATTACHING PAN HEADS

Pan Heads are attached to the tripod by means of an integral stud fitted with a transverse cone-point set screw. This stud is inserted into the Elevator Column, which has a hardened insert to receive the point of the set screw.



A special hex key for turning the Set Screw is carried in the clip attached to a leg strut. With the Set Screw fully retracted, the stud is inserted into the Column. Then the Set Screw is tightened to lock the connection securely.

CAUTION: Be sure Set Screw is fully retracted into the stud before attaching or removing Pan Head, to avoid scoring bushing with point of Set Screw.

LEVELING PAN HEAD

The Pan Head can be precisely leveled by adjusting the length of the individual tripod legs. The easiest way to do this is: First, rotate the Pan Head until a line passing through the center of the level and the center of the Pan Head is parallel to a line passing through two legs. Second, adjust either, or both, of these two legs until the level bubble is centralized in the line of the legs. Third, adjust the third leg until the level bubble moves to the center of the vial. With the Pan Head so leveled, the top will remain parallel to the horizon regardless of the direction in which it is pointed.

PAN HEADS

All Pan Heads have ball-bearing vertical pivot construction. The main body member of the Pan Head revolves on a large steel shaft through the medium of two axially spaced precision ball-bearings. The bearings are preloaded so that lost motion is eliminated while retaining full freedom of rotation. A Band Brake provides adjustable drag, or locks the pan motionless.

The Camera Plate tilts on precision roller bearings which provide frictionless movement even under heavy loads. The tilting mechanism includes torsion springs, connected to reduce the tendency of the camera to "nose dive" when tilted forward. The strength of these springs has been selected to handle normal equipment. Where light-weight equipment is used habitually and the counter-balancing is found excessive, one of the springs can be removed. Extra stiff springs for handling heavy equipment are available. A multiple contact brake provides adjustable drag, or locks the tilt motionless. A precision circular level is mounted in the body of the Pan Head and precisely aligned with the vertical axis.

FRICTION MOVIE HEAD

The Camera Plate is adjustable forward and backward, and is held in the desired position by tightening the locking knob located at the right hand edge of the plate.

Attaching the camera is easiest if the plate is slid as far forward as it will go. The plate should then be adjusted to the position which gives the operator the best balance with the camera in use.

The Universal Handle is adjustable for length by loosening the knurled ring near the middle of the handle. It is adjustable for offset and angle by loosening the screw in the Universal Joint, using the special hex key furnished with the tripod.

The operation of the other controls will be obvious upon examination.

GEARED MOVIE PAN HEAD

Operation of the controls will be apparent upon examination. See Friction Pan Head for information on adjustable top plate.

TV HEAD

Both pan and tilt have fast acting Lever Lock and independent adjustable drag. Locking Levers are adjustable for position to suit the user. To adjust position of Lever, loosen Lock Screw, using special hex key furnished with tripod, tap handle to loosen taper lock, position lever as desired and tighten screw. Adjustment of Camera Plate and Universal Handle are the same as for Friction Movie Head.

STILL CAMERA PAN HEAD

Attaching the camera to the Pan Head will be easier if the Camera Screw is slid toward the edge of the plate and started into the tripod socket on the camera in this position. Then the camera can be slid to desired location on plate, and Camera Screw tightened securely.

Operation of the various controls will be obvious upon examination.

CARE & MAINTENANCE

All Industrial Photographic Equipment is amply protected against corrosion from normal exposure, and under usual conditions can be expected to operate indefinitely.

If equipment is exposed to damp salt atmospheres, it is advisable to wash the equipment frequently and thoroughly with clean, fresh water and wipe dry. Do not use compressed air to blow dry, to avoid blowing water into the interior areas.

Surfaces subject to sliding friction should be kept free of dust by occasional wiping. These include the Elevator Column, Strut Tube, and lower leg sections.

LUBRICATION

TRIPOD - Twice a year put one drop of light lubricating oil on the threads of all clamp screws; on each side of joint where legs are hinged to tripod plate, and on hinge joints at both ends of leg struts. Do not apply any oil to lower legs or strut tube.

ELEVATOR MECHANISM - Twice a year apply one drop of lubricating oil to both worm shaft bearings, worm thrust bearing, both pinion shaft bearings. Distribute a small amount of grease in threads of worm. Do not apply any oil to teeth of pinion, or to the Elevator Column.

PAN HEADS - Horizontal and vertical pivot anti-friction bearings are permanently lubricated. Twice a year apply one drop of light lubricating oil to threads of clamp screws. On pan head with gear drive, apply one drop of lubricating oil to hand wheel shaft bearing.

SERVICE

If any of your Quick-Set Industrial Equipment fails to operate properly for any reason, send it direct to Service Department, Quick-Set, Inc., Northbrook, Illinois, with a letter of explanation attached, including the date and place of purchase. Your equipment will be quickly serviced — normally within forty-eight hours — and you will have it back, in proper working condition, and probably sooner than if you attempt the job yourself, or send it to some local "expert".