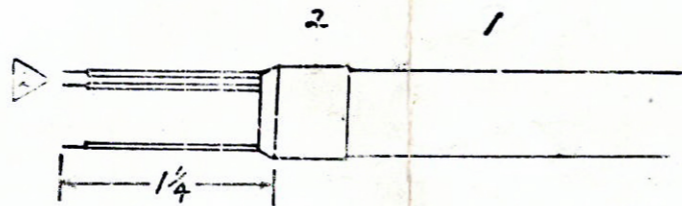
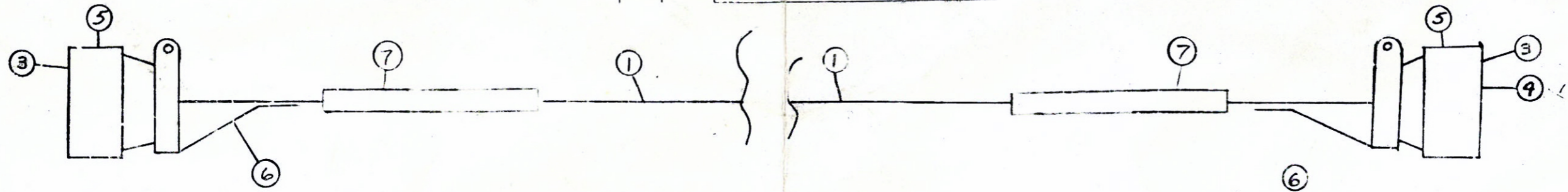


REV	DATE	BY	REVISION	ORIG NO
1	3-16-76	ADD ITEM 7		



PIN	WIRE COLOR
1	RED
2	WHITE
3	BLUE
4	BLACK
5	ORANGE
6	GREEN
7	BLUE WITH BK. STRIP
8	GREEN WITH WHITE STRIP
9	BLACK WITH WHITE STRIP
10	RED WITH WHITE STRIP
11	BLUE WITH WHITE STRIP
12	GREEN WITH BK. STRIP
13	ORANGE WITH BK. STRIP
14	RED WITH BK. STRIP
15	WHITE WITH BK. STRIP

NOTES

- 1 CONTACT #15 IS A FEMALE CONTACT AT ONE END ONLY.
- 2 USE STANDARD AMP STRIPPING DIMENSION
- 3 STAMP PART NUMBER ON TUBING AND APPLY TO EACH END OF CABLE

QTY	UNIT	DESCRIPTION			
7		296-0263-00 SHIPINK TUBING 2" (PART NUMBER)			
2	2	2	2	6	827 7848001 CABLE CLAMP
2	2	2	2	5	6100151 000
1	1	1	1	4	354 0335 000
29	29	29	29	3	354 0365 000 MALE CONTACT, AMP
2	2	2	2	2	296 0263 000 1/2" O.D. TUBING
21'	18'	15'	12'	1	250 0119 000 15 CONDUCTOR CABLE

12/80
12/80
12/80
12/80

004	003	002	001	TEMP	PART NUMBER	DESCRIPTION
						GATES RADIO COMPANY QUINCY, ILLINOIS CABLES, INTERCONNECTING CUBICLES TO RM ACCESS ASSY
						927 8864001