



# Flare Mounted Threaded Standoffs

## Series CKFB3



CKFB3 flare mounted threaded standoffs provide a flared shank for stronger holding power and are used for spacing or stacking P-C boards.

Series	Material	Finish
CKFB3	Brass CDA-360	Electro Tin Plating ASTM B545 Class B (Zinc* Optional)

Part Number Structure:

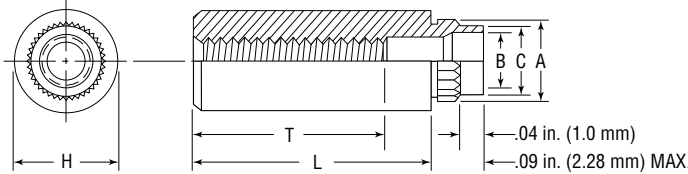
\*Spec. ASTM B633-85

CKFB3 440-2



Thread: Class 2B, MIL-S-7742; (6H ISO Metric).

Use in: Materials with Rockwell Hardness of B-65 or less.



### Dimensions & Specifications

Thread Size	Part Number	L Length ± .005 in.										A ±.003	C Max.	B ±.003	H ±.005	+ .005 - .001	Min.	Min.		
		.0625	.125	.1875	.250	.3125	.375	.500	.625	.750										
		Full																	.375 + .015	
INCH (in.)	#4-40	CKFB3440	-2	-4	-6	-8	-10	-12	-16	-20		.179	.165	.122	.22	.166	.17	.050		
	#6-32	CKFB3632	-2	-4	-6	-8	-10	-12	-16	-20*	-24*	.226	.212	.171	.28	.213	.22	.065		
"T" Minimum thread length			Full										.375 + .015							

### Dimensions & Specifications

Thread Size	Part Number	L Length ± 0.13 mm										A ± .08	C Max.	B ±.08	H ±.13	+ .13 - .03	Min.	Min.		
		2	3	4	6	8	10	12	14	16										
		Full																	9.5 ± 0.4	
METRIC (mm)	M3x0.5	CKFB3M3	-2	-3	-4	-6	-8	-10	-12	-14	-16	4.55	4.21	3.20	5.56	4.2	4.33	1.27		
	M4x0.7	CKFB3M4	-2	-3	-4	-6	-8	-10	-12	-14	-16	6.68	6.40	5.23	8.74	6.4	6.36	1.65		
"T" Minimum thread length			Full										9.5 ± 0.4							

### Installation & Performance Data

Thread Size	Fiberglass 0.060 in. (1.5 mm)			
	Installation Force (lbs.)	Pushout (lbs.)	Torque-out (in.-lbs.)	
INCH (in.)	#4-40	1000	140	18
	#6-32	1500	170	28
Thread Size	Installation Force (kN)	Pushout (N)	Torque-out (N•m)	
	M3	4.4	560	2.02
M4	6.0	680	3.20	