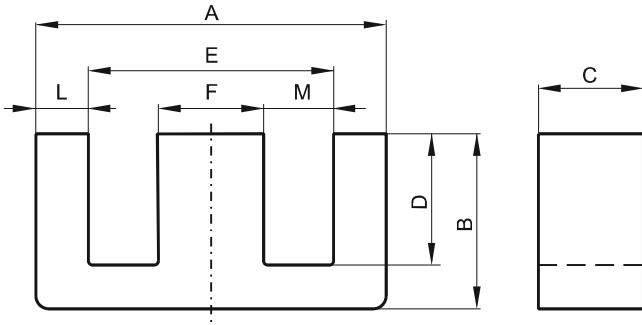


**DIMENSIONS**



(mm)	Nominal:	Tol. min.:	Tol. max.:
<b>A</b>	34.2	-0.6	+ 0.6
<b>B</b>	14.1	-0.15	+ 0.15
<b>C</b>	9.3	-0.25	+ 0.25
<b>D</b>	9.8	-0.13	+ 0.13
<b>E</b>	25.5 Min.		
<b>F</b>	9.3	-0.2	+ 0.2
<b>L</b>	4.7 Max.		
<b>M</b>	8.0 Min.		
<b>Eff. Parameters</b>			
<b>Ae mm<sup>2</sup></b>	<b>Amin mm<sup>2</sup></b>	<b>le mm</b>	<b>Ve mm<sup>3</sup></b>
87.0	87.0	69.3	5590

**INDUCTANCE**

AL value (nH)	Test conditions
Nom: 2907 Min.: 2180	10 kHz, < 0.5 mT, 25 °C

**MARKING**

P EC
---------

**CORE LOSSES**

P <sub>i</sub> max	Test conditions
113 mW/cm <sup>3</sup> (0.63 W/set)	100 kHz, 100 mT, 100 °C

**NOTE**

Spec. modifications	Previous	Revised
2005-06-22	A=34.2 Min. B=14.0 Min. C=9.52 Max. C=9.17 Min. F=9.27 Min. Losses: General P material	A=33.7 Min. B=13.95 Min. C=9.55 Max. C=9.05 Min. F=9.1 Min. Losses: Detail as indicated