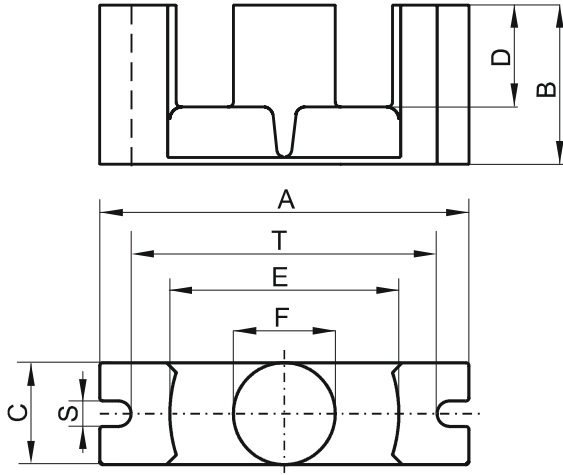


Specification for:

0P-45224-EC

111 Zeta Drive
Pittsburgh, PA 15238
Phone: 412/696-1333
Fax: 412/696-0333
Email: magnetics@spang.com

DIMENSIONS



(mm)	Nominal:	Tol. min.:	Tol. max.:
A	52.2	-1.3	+ 1.3
B	24.2	-0.15	+ 0.15
C	13.4	-0.35	+ 0.35
D	15.9	-0.4	+ 0.4
E	33.0	-0.9	+ 0.9
F	13.4	-0.35	+ 0.35
S	3.75	-0.25	+ 0.25
T	44.0	-1.3	+ 1.3
Eff. Parameters			
Ae mm ²	Amin mm ²	le mm	Ve mm ³
180.0	141.0	105.0	18800

INDUCTANCE

AL value (nH)	Test conditions
Nom: 4200 Min.: 3150	10 kHz, < 0.5 mT, 25 °C

MARKING

0P45224EC PXXXXX

CORE LOSSES

P _i max	Test conditions
128 mW/cm ³ (2.4 W/set)	100 kHz, 100 mT, 100 °C

NOTE

Spec. modifications	Previous	Revised
2005-06-22	A=53.47 Max. A=50.93 Min. C=13.73 Max. C=13.07 Min. E=32.13 Min. F=13.73 Max. F=13.07 Min. S=3.75±0.23 T=44.0±1.27 Losses: General P material	A=53.5 Max. A=50.9 Min. C=13.75 Max. C=13.05 Min. E=32.1 Min. F=13.75 Max. F=13.05 Min. S=3.75±0.25 T=44.0±1.3 Losses: Detail as indicated