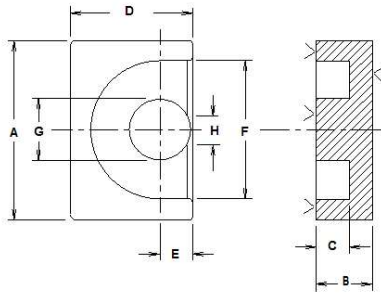


TSC Ferrite International



TSC FERRITE INTERNATIONAL EP CORE DIMENSIONS

PART #	A		B		C		D		E		F		G	
	in	mm	in	mm	in	mm	in	mm	in	mm	in	mm	in	mm
EP7 09-04-06	0.362 +/-0.007	9.20 +/-0.18	0.146 +/-0.003	3.71 +/-0.01	0.100 +/-0.002	2.54 +/-0.05	0.250 +/-0.005	6.35 +/-0.13	0.067 +/-0.004	1.70 +/-0.10	0.291 +/-0.008	7.39 +/-0.02	0.130 +/-0.004	3.30 +/-0.10
EP10 12-05-08	0.453 +/-0.012	11.50 +/-0.3	0.202 +/-0.004	5.13 +/-0.10	0.145 +/-0.003	3.68 +/-0.07	0.301 +/-0.008	7.60 +/-0.20	0.073 +/-0.004	1.85 +/-0.10	0.369 +/-0.007	9.37 +/-0.18	0.133 +/-0.003	3.38 +/-0.08
EP13 13-06-09	0.492 +/-0.011	12.50 +/-0.28	0.253 +/-0.005	6.43 +/-0.13	0.181 +/-0.004	4.60 +/-0.1	0.346 +/-0.008	8.79 +/-0.20	0.093 +/-0.005	2.36 +/-0.13	0.391 +/-0.008	9.93 +/-0.20	0.171 +/-0.003	4.34 +/-0.08
EP17 18-08-11	0.709 +/-0.014	18.00 +/-0.35	0.331 +/-0.003	8.41 +/-0.08	0.224 +/-0.004	5.69 +/-0.10	0.433 +/-0.009	11.00 +/-0.23	0.128 +/-0.003	3.25 +/-0.08	0.472 +/-0.009	11.99 +/-0.23	0.224 +/-0.004	5.69 +/-0.10

PART #	MAGNETIC PATH LENGTH Le cm	EFFECTIVE CORE AREA Ae cm ²	EFFECTIVE CORE VOLUME Ve cm ³	WINDOW AREA Wa cm ²	POWER HANDLING CAPABILITY INDEX WaAe cm ⁴	CORE SET WEIGHT GRAMS	INDUCTANCE INDEX AL nH/N ²				
							ASTM Material Type				
							ASTM P7099 ASTM P5099	ASTM P7070	ASTM P8040 ASTM F3000 P5025-100	ASTM F5000	ASTM F010K
							TSC Ferrite Material Grade				
							TSF-BOOST TSF-7099 TSF-5099 +/-25%	TSF-8040 TSF-50ALL Flat Line +25%	TSF-5000 +/-30%	TSF-010K +/-30%	
09-04-06	1.57	0.10	0.16	0.04	0.00	1.4	1,100	1,120	1,240	2,575	5,140
12-05-08	1.92	0.11	0.22	0.09	0.01	2.8	1,060	1,080	1,200	2,315	4,611
13-06-09	2.42	0.20	0.47	0.15	0.03	5.1	1,565	1,590	2,000	3,170	6,313
18-08-11	2.85	0.34	0.97	0.24	0.08	11.6	2,400	2,655	3,100	4,679	9,319