

BI-PHASE 1 MHz to 2 GHz



TFAS



PAS
GAS

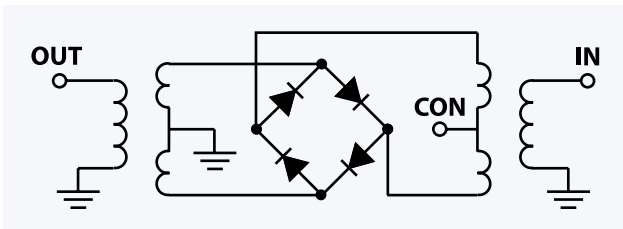
MODEL NO.	FREQUENCY MHz		INSERTION LOSS dB (±20 mA)				MAX. INPUT PWR dBm (±20 mA)		IN-OUT ISOLATION, dB (0 mA)						BI-PHASE \bar{X} (±20 mA) Typ.				CASE STYLE	C O N N E C T I O N	PRICE \$ ea. Qty. (1-9)
	IN f_L - f_U	CON	Mid-Band m		Total Range		1 dB compr.	no damage	L Typ. Min.	M Typ. Min.	U Typ. Min.	Δ AMP (dB) Total Range		Phase(deg) deviation from 180° Total Range		Note B					
PAS-1*	5-450	DC-0.05	3.5	4.0	3.5	4.7	20	29	65	50	45	35	35	25	0.1	0.1	0.5	1.2	A01	cf	36.20
PAS-2*	10-1000	DC-0.05	4.0	6.0	6.5	8.5	20	29	50	40	40	30	35	25	0.1	0.3	0.5	1.0	A01	cg	50.20
PAS-3*	1-200	DC-0.05	1.4	2.0	1.6	2.5	15	29	65	50	50	40	50	35	0.1	0.1	0.5	1.0	A01	cf	37.20
PAS-2000**	100-2000	DC-0.5	4.2	6.5	5.4	7.5	19*	25	30	22	—	—	26	20	0.3	0.4	5.0	8.0	A05	ch	27.20
□ TFAS-1*	2-400	DC-0.05	1.4	2.0	1.6	3.0	20♣	25	65	45	45	33	35	25	0.1	0.1	1.0	2.0	B02	cm	16.20
□ TFAS-2**	10-1000	DC-0.5	3.7	4.5	5.0	8.0	17*	25	50	30	42	20	31	20	0.1	0.2	2.0	3.0	B02	cm	20.20
□ GAS-1**	5-450	DC-0.05	3.3	4	3.5	5.0	20	25	60	48	45	35	35	25	0.10	0.1	1.0	1.5	A05	cf	16.20
□ GAS-2**	10-1000	DC-0.05	4.3	6	5.2	8.5	20	25	55	40	35	25	28	20	0.10	0.3	1.5	3.0	A05	cg	18.20

L = low range [f_L to 10 f_L]

M = mid range [$10f_L$ to $f_U/2$]

U = upper range [$f_U/2$ to f_U]

m = mid band [$2f_L$ to $f_U/2$]



NOTES:

- * Recommended for electronic attenuator
- ** Recommended for bi-phase modulator
- Denotes 75 Ohm model.
- Non-hermetic
- * +15 dBm from 100-800 MHz
- ♣ +15 dBm from 2-10 MHz
- ★ +13 dBm from 10-500 MHz
- A. General Quality Control Procedures, Environmental Specifications, Hi-Rel and MIL description are given in General Information (Section 0).
- B. Connector types and case mounted options, case finishes are given in section 0, see "Case styles & Outline Drawings".
- C. Prices and specifications subject to change without notice.
 1. Absolute maximum power, voltage and current ratings:
 - 1a. Control current, 30mA
 - 1b. Max. Power at room temperature
 2. Performance specifications apply for input power up to 10 dB below stated 1dB compression; example: +5dBm in 2-10MHz range for TFAS-1, TFAS-1SM



TFAS-SM



SYAS



RAS



LRAS

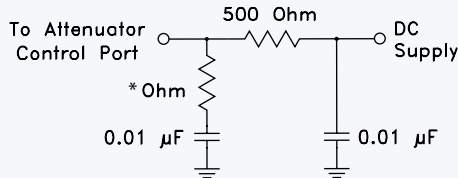
MODEL NO.	FREQUENCY MHz		INSERTION LOSS dB (±20 mA)				MAX. INPUT PWR dBm (±20 mA)		IN-OUT ISOLATION, dB (0 mA)						BI-PHASE \bar{X} (±20 mA) Typ.				CASE STYLE	CONNECTION	PRICE \$ ea. Qty. (1-9)
	IN f_L - f_U	CON	Mid-Band m		Total Range		1 dB compr.	no damage	L	M	U	Δ AMP (dB)	Phase(deg) deviation from 180°	Total Range	Total Range	Note B					
TFAS-1SM*	2-400	DC-0.05	1.4	2.0	1.6	3.0	20✦	25	65	45	45	33	35	25	0.1	0.1	1.0	2.0	NNN150	cm	16.20
TFAS-2SM**	10-1000	DC-0.5	3.7	4.5	5.0	8.0	17★	25	50	30	42	20	31	20	0.1	0.2	2.0	3.0	NNN150	cm	20.20
SYAS-1*	2-400	DC-0.05	1.4	2.0	1.6	3.0	20✦	25	65	45	45	33	35	25	0.1	0.1	1.0	2.0	TTT167	ck	9.95
SYAS-2**	10-1000	DC-0.05	4.0	6.0	4.5	7.0	17★	25	59	40	42	28	28	20	0.1	0.3	2.0	3.0	TTT167	ck	13.95
SYAS-860**	600-1000	DC-0.5	—	—	2.7	5.7	14	25	25	(typ.)	18	(min.)	—	—	—	0.5	—	4.0	TTT166	ck	15.95
RAS-1**	2-400	DC-0.05	1.4	2.4	1.6	3.2	20✦	25	65	45	45	28	32	22	0.10	0.1	1.0	2.0	TT241	ge	7.95
■ RAS-2-75**	10-1000	DC-0.05	4.1	6.0	4.5	7.5	20	25	58	40	42	28	39	20	0.15	0.3	1.5	3.0	TT240	cj	9.95
■ LRAS-2-75**	10-1000	DC-0.05	4.1	6.0	4.5	7.5	20	25	58	40	42	28	39	20	0.15	0.3	1.5	3.0	QQQ130	cj	9.95

L = low range [f_L to $10f_L$]

M = mid range [$10f_L$ to $f_U/2$]
m = mid band [$2f_L$ to $f_U/2$]

U = upper range [$f_U/2$ to f_U]

suggested control port biasing configuration



*50 ohm for 50 ohm models
75 ohm for 75 ohm models

pin and coaxial connections

see case style outline drawings for pin locations

PORT	cf	cg	ch	cj	ck	cm	ge
INPUT	1	1	1	4	1	1	4
OUTPUT	8	8	8	1	2	4	1
CONTROL	3,4 ^	3,4 ^	3	5	3	2	5
GND EXT.	2,5,6,7	2,5,6,7	2,5,6,7	2,3,6	4,5,6	3	2,3,6
CASE GND	2	2,5,6,7	2,5,6,7	—	—	3	—
NOT USED	—	—	4	—	—	—	—

^ Pins must be connected together externally.

NSN GUIDE

MCL NO.	NSN
PAS-1	5985-01-282-2105
PAS-2	5985-01-192-0100
PAS-3	5895-01-067-3035



The Design Engineers Search Engine

Provides Actual Data Instantly
At: <http://www.minicircuits.com>

In Stock... Immediate Delivery

For Custom Versions Of Standard Models
Consult Our Applications Dept.

