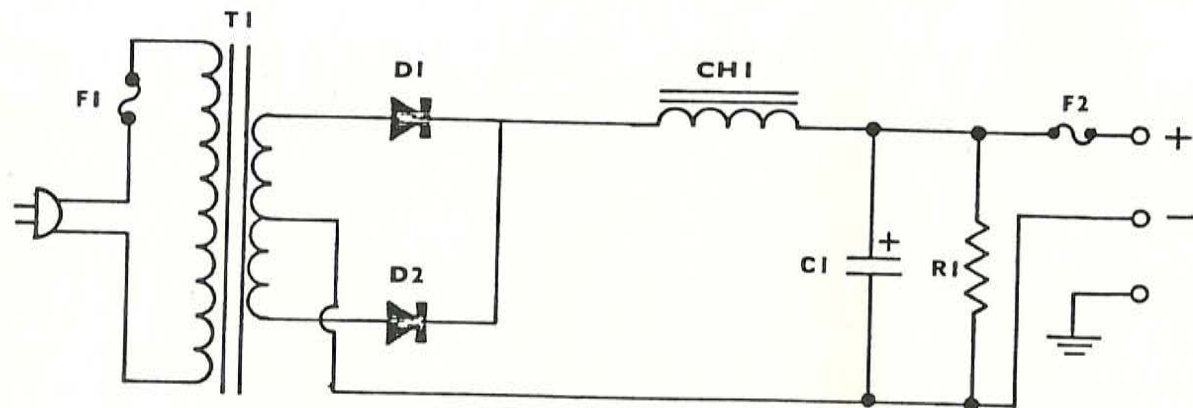


PS24-50 POWER SUPPLY

INPUT: 117 V.A.C.

OUTPUT: 24 V.D.C. @ 5 AMPS.



T1 POWER TRANS. #2450-001
 D1,D2. DIODE 40 AMP,
 @ 200 P.I.V. #2450-005
 CH1 CHOKE #2450-002
 C1 CAP. 5500 mfd. @
 40 V.D.C. #2432-003
 R1 RESISTOR 300 ohm 7W #2432-004

F1 FUSE Buss AGC 3 #2450-006
 F2 FUSE Buss GLQ 5 #2450-007

NOTE: FUSE F2
 THIS FUSE AND KNOB ARE ONE PIECE.
 REPLACE ENTIRE FUSE-KNOB ASSEMBLY.