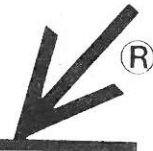


TECHNIPOWER



A *Penril* COMPANY

PO BOX 222 - COMMERCE PARK - DANBURY, CONNECTICUT 06810
TEL 1-203-748-7001 TWX 710-456-9280

OPERATING INSTRUCTIONS FOR POWER SUPPLY SERIES

P-80 PL-80 PM-95 MC-65
MCS-65 F-115 FD-115

TABLE OF CONTENTS

	PAGE
1. CONNECTIONS	2
2. THERMAL INSTALLATION	2
3. INPUT FUSING	2
4. OPERATION NOTES	
a. Series Operation	3
b. Operation Above Ground	3
c. Parallel Operation	3
d. Short Circuit Protection	3
e. Rack Mounted Modules	3
5. SUFFIX CODING	4, 5, 6, 7
6. ELECTRICAL SPECIFICATIONS	8
7. TYPICAL FEATURES	8
8. MECHANICAL SPECIFICATIONS	9, 10, 11
a. P, MC, MCS Series	9
b. PM Series	9
c. F, FD Series	10
d. PL Series	11
9. SERVICE INFORMATION	11
10. WARRANTY INFORMATION	12

form 230-01163C

SUFFIX CODING

If a suffix letter appears after the module number on the module nameplate, this indicates that a special feature has been incorporated. For example, PM 14.5-1.5AY indicates that the regulation accuracy is $\pm 0.05\%$ ("A" Suffix) and that the module incorporates external voltage adjustment and remote sensing ("Y" Suffix). The suffixes in use, and their meanings are as follows:

<u>SUFFIX</u>	<u>MEANING</u>
A	Regulation accuracy $\pm 0.05\%$
AA	Regulation accuracy $\pm 0.01\%$ line, $\pm 0.025\%$ or 1 MV (whichever is greater) load.
B	Input 208VAC $\pm 10\%$, 50-400Hz
BB	Input 230VAC $\pm 10\%$, 50-400Hz
D	Module is designed for 400Hz operation only. Do not connect to 50 or 60 Hz line.
E	Current limiting has been modified to accommodate heavy surges such as might be expected from a filament or lamp load.
F	Fixed output (no output adjustment). The output setting is set at the factory at $\pm 1\%$ of nominal setting (see nameplate).
G	Module has flange brackets attached to case and is fully encapsulated to meet the high shock requirements of MIL-S-901C. Request the following drawings for detailed dimensional data:

CASE SIZE:

DRAWING NO.:

A to G	140-111
GA	140-676
GB	140-678
GC	140-680
GD	140-682
GE	consult factory

ELECTRICAL SPECIFICATIONS

PL-80, MC-65, MCS-65, P-80, PM-95, F-115 & FD 115 SERIES

INPUT VOLTAGE RANGE	105-125VAC
INPUT FREQUENCY RANGE	50-400Hz (FD-115 - 400Hz only)
REGULATION ACCURACY (COMBINED LOAD AND LINE)	+0.05% ("A" suffix, MC, F & FD series) +0.5% (standard models, MCS series)
RIPPLE	Less than 0.002% or 1 mv RMS (whichever is greater) on "A" suffix, F series, 60 Hz input* Less than 0.004% or 2 mv RMS (whichever is greater) on MC series, 60 Hz input* Less than 0.004% or 3 mv RMS (whichever is greater) on FD series, 400 Hz input Less than 0.01% or 5 mv RMS on standard models, MCS series with 60 Hz input*
OUTPUT ADJUSTMENT RANGE	10% (+5% of nominal) by screwdriver adjustment in base, or front panel potentiometer on rack mounted units. At 80% of rated current, the output may be adjusted a full 20% (+10% of nominal).
POLARITY	May be used positive or negative.

MAXIMUM TEMPERATURE RATINGS

<u>Series</u>	<u>Operating Temperature</u>	<u>Storage Temperature</u>
MC, MCS	-20°C to + 65°C (max. base temp.)	-62°C to + 85°C
P, PL	-20°C to + 80°C (max. base temp.)	-62°C to + 85°C
PM	-55°C to + 95°C (max. base temp.)	-62°C to 105°C
F, FD	-62°C to +115°C (max. base temp.)	-62°C to 125°C

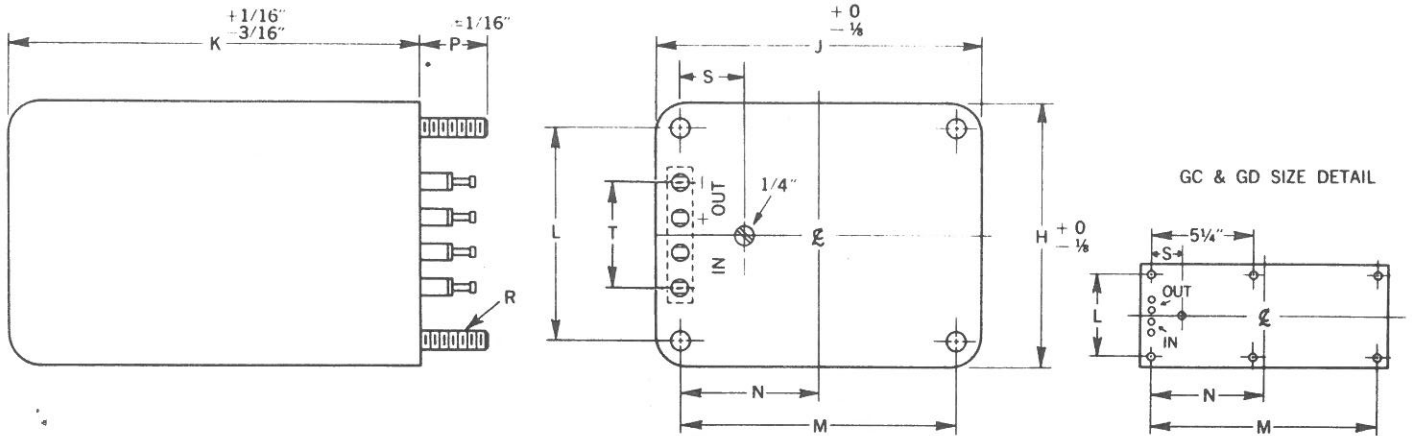
*On 50-400Hz input models, the ripple specification increases to 0.004% or 3 mv RMS (whichever is greater) on A suffix, 0.04% or 10 mv RMS (whichever is greater) on regular suffix and MCS models, 0.008% or 4 mv RMS (whichever is greater) on MC models with 400Hz input.

TYPICAL FEATURES

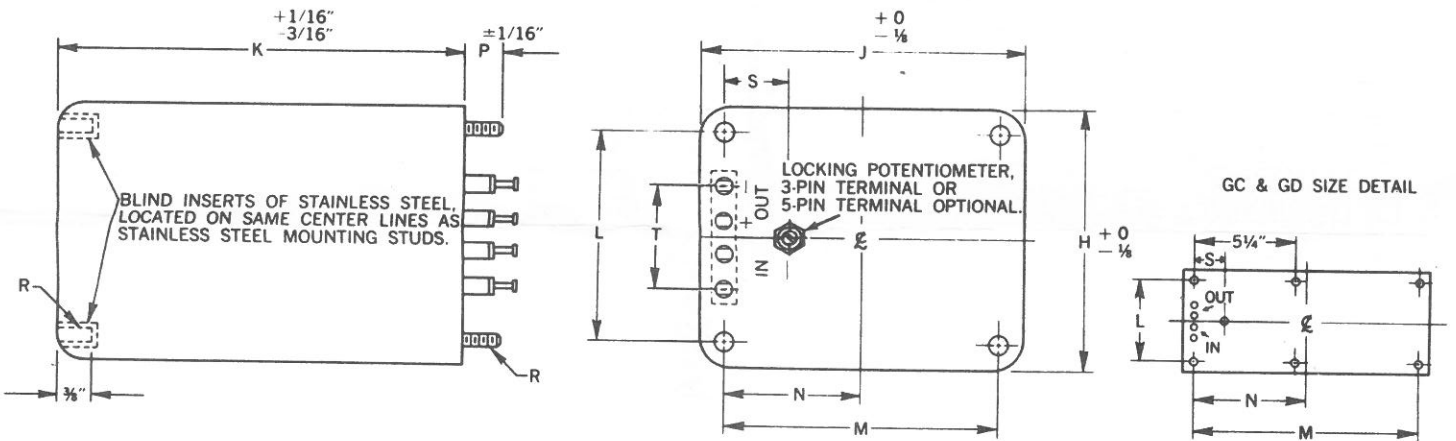
TEMPERATURE COEFFICIENT	0.015%/°C or 1 mv/°C whichever is greater.
RECOVERY TIME (HALF LOAD TO FULL LOAD)	Less than 50 micro. sec. Half load to full load

MECHANICAL SPECIFICATIONS

P, MC, MCS SERIES



PM SERIES



MODULE DIMENSIONS

CASE SIZE	H	J	K	L	M	N	P	R	S	T	TOLERANCES			RECOMMENDED CLEARANCE TERMINAL CUTOUTS
											L, M, N, S			
A	2 3/8	2 3/4	3 1/8	1 3/8	2 1/8	1 1/8	1 1/32	6-32	1 1/2	1 5/8	± 1/64		3/8 x 1 1/8	
B	2 3/8	3 1/8	4 1/4	1 5/8	2 1/4	1 3/8	1 1/32	8-32	1 1/2	1 5/8	± 1/64		3/8 x 1 1/8	
C	3 1/8	3 3/8	4 3/8	2 1/8	2 3/8	1 3/8	1 1/32	8-32	1 1/2	1 5/8	± 1/64		3/8 x 1 1/8	
D	3 3/8	3 5/8	5 1/4	2 3/8	3	1 1/2	1 1/32	10-32	1 1/2	1 5/8	± 1/32		3/8 x 1 1/8	
E	3 5/8	4 1/8	5 3/8	2 5/8	3 3/8	1 3/4	3/16	10-32	1 1/2	1 5/8	± 1/32		3/8 x 1 1/8	
F	4	4 5/8	6	3	3 5/8	1 3/4	3/16	1/4-20	1 1/2	1 5/8	± 1/64		3/8 x 1 1/8	
G	4 1/8	5 1/8	6 1/8	3 3/8	4 1/8	2 1/4	3/16	1/4-20	1 1/2	1 5/8	± 1/64		3/8 x 1 1/8	
GA	4 5/8	6 1/8	7	3 3/8	5 1/8	2 3/8	1 1/32	3/16-18	3/4	1 1/2	± 1/64		1/2 x 2	
GB	6 1/8	6 3/4	7	5 1/4	5 3/8	2 3/4	1 1/32	3/16-18	3/4	1 1/2	± 1/64		1/2 x 2	
GC*	4 1/8	13 1/8	7	3 3/8	11 1/8	5 3/4	1 1/32	3/16-18	3/4	1 3/8	± 1/64		3/8 x 2 1/2	
GD*	6 1/8	13 1/8	7	5 1/8	11 1/8	5 3/4	1 1/32	3/16-18	3/4	1 3/8	± 1/64		3/8 x 2 1/2	