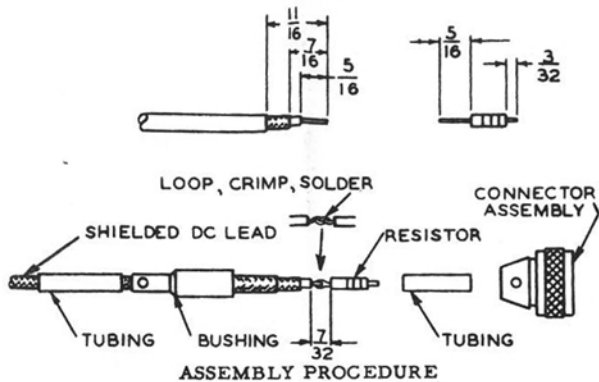


CONNECTOR CAP ASSEMBLY INSTRUCTIONS



The cap assembly supplied with the coupler consists of a connector, bushing, resistor and two lengths of tubing. These parts must be assembled to the shielded indicator lead as outlined, using the above illustration as a guide.

1. Strip the shielded indicator lead as shown.
2. Trim the resistor wires to the dimensions given.
3. Slide the longer tubing and bushing, respectively, onto the shielded lead.
4. Loop, crimp, and solder the resistor wire to conductor of shielded lead.
5. Position shorter tubing over resistor and soldered connection.
6. Solder opposite resistor wire to terminal in connector.
7. Seat bushing in connector body and tighten set screw.
8. Solder shielding of indicator lead to bushing through holes in bushing.
9. Position the rubber tubing over end of bushing.

**MICROWAVE
DEVICES, INC.**

P.O. BOX 552
FRANKLIN, IN 46131