



**PRINCIPAL SPECIFICATIONS**

<b>Model Number</b>	<b>Mechanical Configuration</b>	<b>Weight oz. (g)</b>
AUM-25A	Standard Model	2.5 (70)
AUMP-25A	Panel Mount Version	3.8 (106)
AUMP-25AKX	Panel Mount w/ Knob	4 (112)
AUMP-25ATX	Panel Mount w/ TC Dial	4 (112)

**GENERAL SPECIFICATIONS**

Attenuation Range:

0.5 - 1 GHz:	10 dB min.
1 - 2 GHz:	20 dB min.
2 - 4 GHz:	30 dB min.
4 - 8 GHz:	40 dB min.
8 - 12 GHz:	30 dB min.

Insertion Loss:

0.5 - 8 GHz:	0.5 dB max.
8 - 12 GHz:	0.7 dB max.

VSWR:

0.5 - 8 GHz:	1.5:1 max.
8 - 12 GHz:	2.0:1 max.

Impedance: 50 Ω nom.

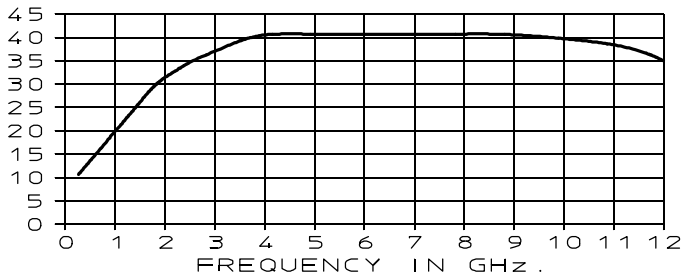
CW Power: 2 Watts max

Operating Temperature: -55° to +85°C

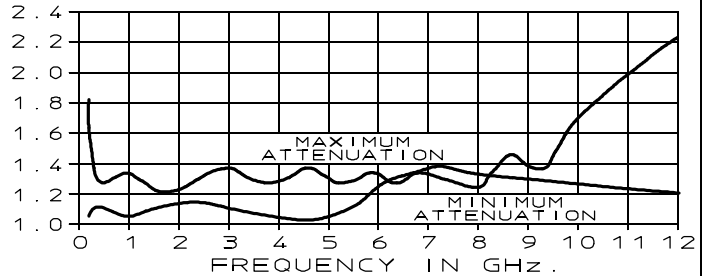
**General Notes:**

1. The AUM/AUMP-25A series has been designed for wideband ECM systems and other microwave applications in the 0.5 to 12 GHz frequency band where precise attenuation must be maintained over a wide variety of military and laboratory environments. Applications include signal and LO power control, automatic level control and impedance matching.
2. The AUM/AUMP-25A series of attenuators use ferrite absorption of microwave energy for long term stability and high reliability. They meet applicable paragraphs of MIL-A-24215 and can be supplied screened to meet specific military and commercial high reliability applications.

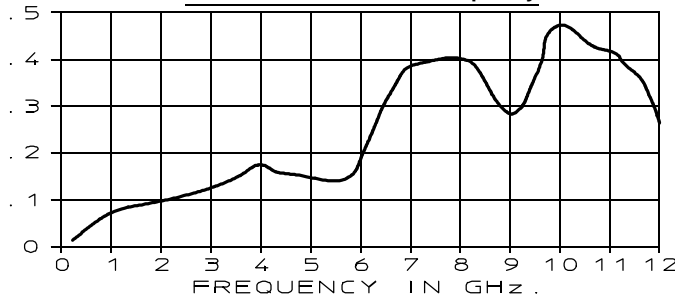
**Attenuation in dB vs. Frequency**



**VSWR vs. Frequency**



**Insertion Loss in dB vs. Frequency**



**Typical Performance**

30Apr96

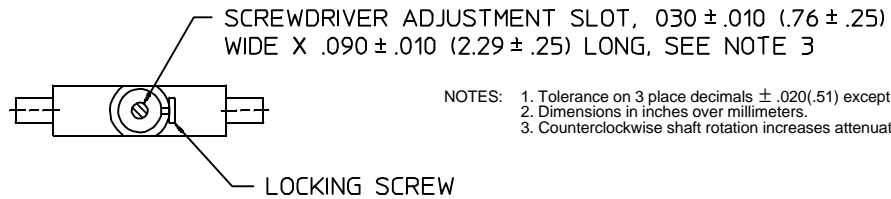
# AUM & AUMP-25A

# MICROWAVE ATTENUATORS

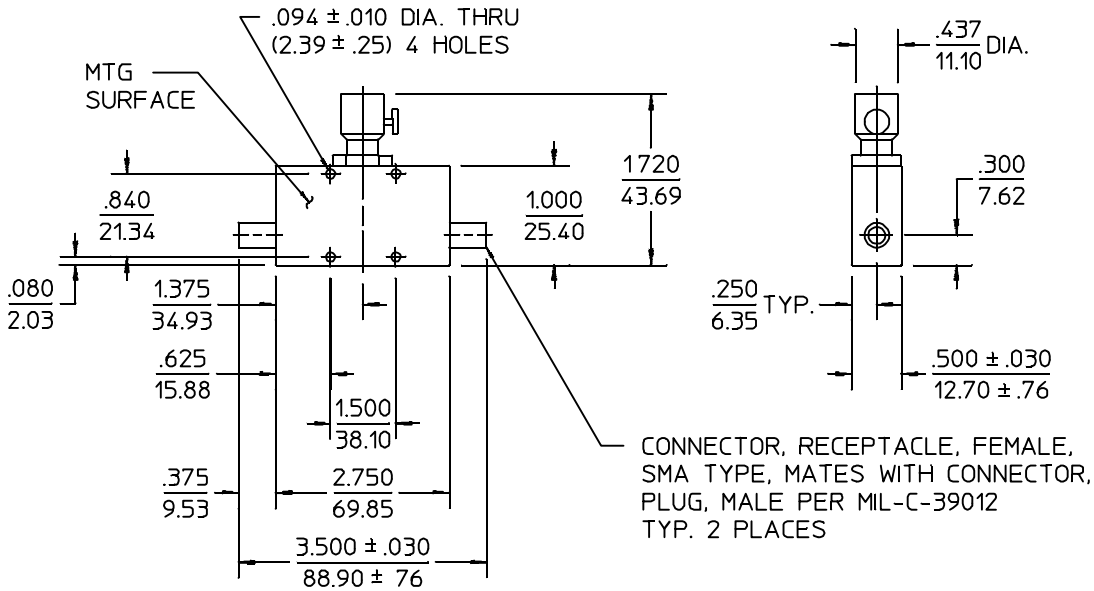
0.5 to 12 GHz / 0 to 30 dB / Ferrite / Excellent Temperature Stability / MIL-E-5400 Class 3 / SMA



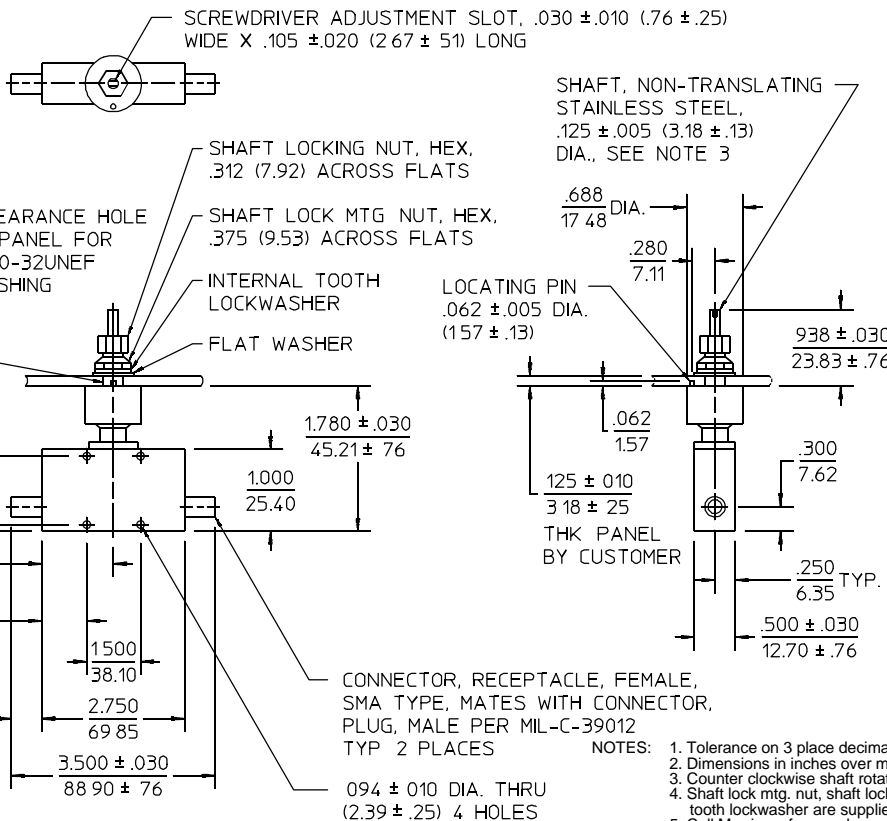
## AUM-25A



- NOTES: 1. Tolerance on 3 place decimals  $\pm .020(.51)$  except as noted.  
2. Dimensions in inches over millimeters.  
3. Counterclockwise shaft rotation increases attenuation.



## AUMP-25A



05Mar96