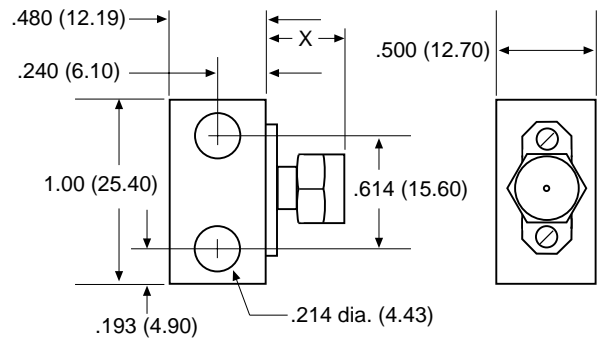


PERFORMANCE SPECIFICATIONS:

PART NUMBER	CONNECTOR TYPE	"X"	VSWR (max.)
RCX-SF15A	FEMALE	.375	DC to 4 GHz - 1.15:1 4 to 8 GHz - 1.25:1 8 to 12 GHz - 1.30:1
RCX-SM15A	MALE	.510	
RCX-SF15B	FEMALE	.375	
RCX-SM15B	MALE	.510	DC to 8 GHz - 1.25:1 8 to 12 GHz - 1.30:1 12 to 18 GHz - 1.35:1
RCX-SF15C	FEMALE	.375	DC to 8 GHz - 1.25:1
RCX-SM15C	MALE	.510	
RCX-SF15D	FEMALE	.375	DC to 4 GHz - 1.15:1
RCX-SM15D	MALE	.510	

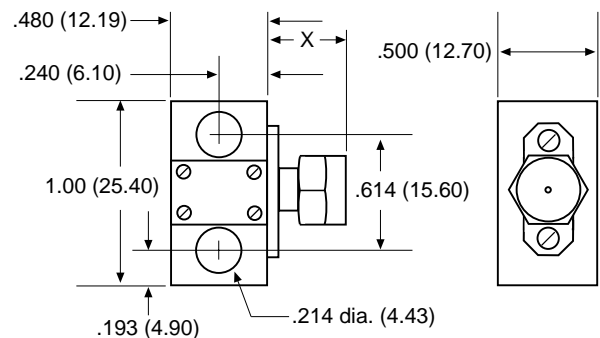
SMA CONNECTORS



15 WATTS (1KW peak)

PERFORMANCE SPECIFICATIONS:

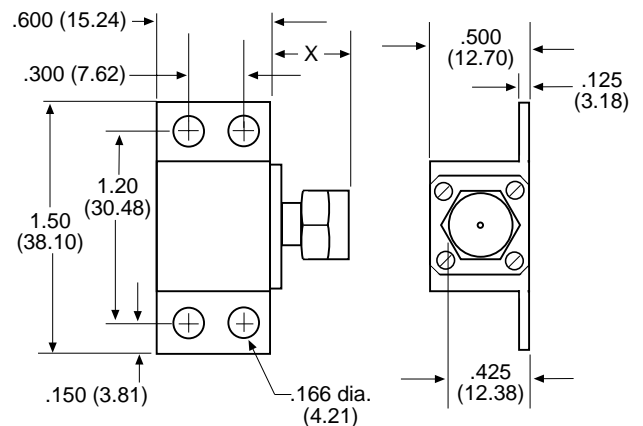
PART NUMBER	CONNECTOR TYPE	"X"	VSWR (max.)
RCX-SF20A	FEMALE	.375	DC to 1 GHz - 1.15:1 1 to 3 GHz - 1.25:1
RCX-SM20A	MALE	.510	
RCX-SF20B	FEMALE	.375	DC to 3 GHz - 1.25:1 3 to 5 GHz - 1.35:1
RCX-SM20B	MALE	.510	



20 WATTS (1KW peak)

PERFORMANCE SPECIFICATIONS:

PART NUMBER	CONNECTOR TYPE	"X"	VSWR (max.)
RCX-SF30A	FEMALE	.375	DC to 4 GHz - 1.20:1 4 to 8 GHz - 1.25:1 8 to 12 GHz - 1.30:1
RCX-SM30A	MALE	.510	
RCX-SF30B	FEMALE	.375	
RCX-SM30B	MALE	.510	DC to 8 GHz - 1.25:1 8 to 12 GHz - 1.30:1 12 to 18 GHz - 1.35:1
RCX-SF30C	FEMALE	.375	DC to 8 GHz - 1.30:1
RCX-SM30C	MALE	.510	
RCX-SF30D	FEMALE	.375	DC to 4 GHz - 1.20:1
RCX-SM30D	MALE	.510	



30 WATTS (5KW peak)