

WARRANTY

The AGASTAT time delay relay is warranted against mechanical and electrical defects for a period of one year from date of shipment from factory if it has been installed and used in accordance with factory recommendations. New parts will be furnished free of charge in exchange for parts which have proven defective. The furnishing of these parts shall constitute fulfillment of the Company's obligations and liabilities.

GENERAL

The Miniature Agastat time delay relay which you have received is a precision instrument which has been tested for performance before leaving the factory.

The information in this booklet is designed to help you obtain maximum efficiency in your application.



ELASTIC STOP NUT CORP. OF AMERICA
ELIZABETH DIVISION • ELIZABETH, N. J.

SM-1

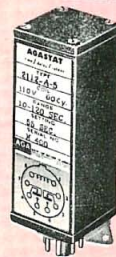
Printed in U.S.A.



Hermetically Sealed
Solder Lug Terminal

- Mounting Instructions
- Timing Adjustment
- Terminal and Contact Arrangements
- Contact Capacity

INSTALLATION INFORMATION



Unsealed
Octal Plug



Hermetically Sealed
"AN" Connector

MINIATURE AGASTAT

time/delay/relay

MOUNTING

All Miniature units will operate in any position. For orientation during environmental testing such as acceleration, etc. see Bulletin SM-2. Solder lug terminal and AN Connector Models are mounted by means of attached mounting plate. Octal Plug Models are secured in position by a mounting bracket.

ADJUSTMENT

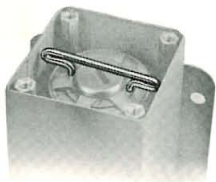


Fig. 1

TIMING RANGES

All Miniature Agastat relays are adjustable in one of the following three methods:

1. Hermetically sealed units are adjusted by removing the protecting cap nut from the top of the unit and with a screw driver, turning the exposed adjusting screw clockwise to increase the time, counter-clockwise to decrease. Adjustment should be gradual.
2. In the unsealed units the adjustment is made by removing the cover plate secured by four holding screws and turning the adjusting wire key (see Fig. 1) clockwise to increase time, counter-clockwise to decrease.
3. An unsealed model is also available with an external knob adjustment. An indicating plate with the letters "O" through "E" is the guide to adjustment with zero time at "O" and maximum time at "E".

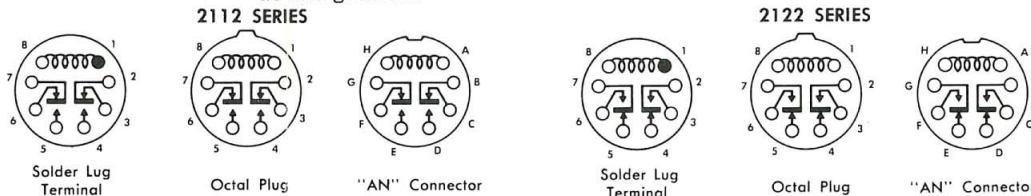
This unit is adjustable throughout one of the following timing ranges:

.030 sec. to *3 sec.	2.0 sec. to *60 sec.	30 sec. to 180 sec.
.75 sec. to *10 sec.	10.0 sec. to *120 sec.	

*This is minimum. Maximum may be as much as 50% higher.

TERMINAL & CONTACT ARRANGEMENT

Miniature Agastat relays are available in two types of operation. 2112 Series provides time delay on energization and 2122 series provides time delay on de-energization.



COIL DATA

Nominal Operating Voltage	Current At Rated Voltage $\pm 10\%$	Resistance $\pm 10\%$	TEMP. RISE	POWER INPUT
12 VDC	.40 AMPS	30 OHMS	48°C	4.8 WATTS
28 VDC	.21 AMPS	131 OHMS	55°C	6 WATTS
48 VDC	.06 AMPS	765 OHMS	40°C	3 WATTS
110 VDC	.023 AMPS	4945 OHMS	52°C	2.6 WATTS
110 V 60 CPS	.080 AMPS	190 OHMS	51°C	4 WATTS
220 V 60 CPS	.045 AMPS	765 OHMS	45°C	4.5 WATTS

CONTACT CAPACITY

	30 volts D.C.	110 volts D.C.	30 volts A.C. 400 CPS	110 volts A.C.	220 volts A.C.
†Inductive	2 Amps.	.75 Amps.	2 Amps.	3 Amps.	1.5 Amps.
Resistive	10 Amps.	1 Amp.	—	5 Amps.	2.5 Amps.

†Inductive and capacitive loads should not have inrush currents that exceed 5 times normal operating load.