

DPDT, 10 AMPS

WIRING DIAGRAM
(VIEWED FROM PIN END)



UL Recognized
File No. E43641

LISTED 367G
IND. CONT. EQ.



WHEN USED WITH
SOCKETS:
70-464-1 (8 PIN)
70-465-1 (11 PIN)



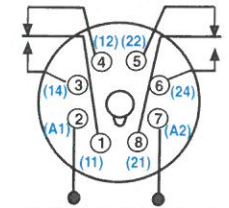
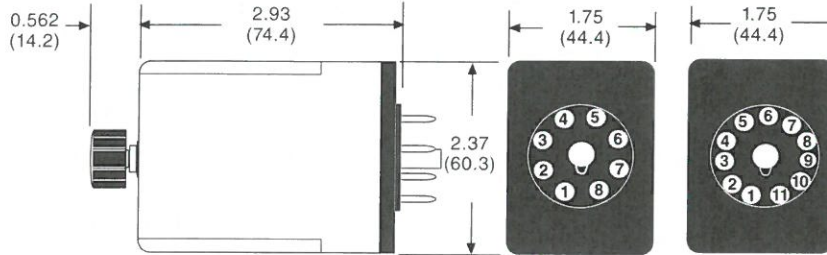
COMPLIES WITH REQUIREMENTS OF

IEC STANDARDS 947-4-1 AND 947-5-1 LOW VOLTAGE DIRECTIVE

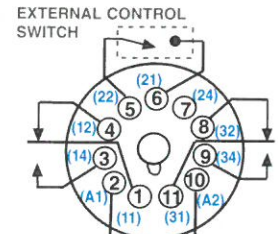
IEC = INTERNATIONAL ELECTROTECHNICAL COMMISSION

CE TESTING AND EVALUATION PERFORMED BY THE UNDERWRITERS LABORATORIES AS A THIRD PARTY PARTICIPANT

OUTLINE DIMENSIONS
DIMENSIONS SHOWN IN INCHES & (MILLIMETERS).



INPUT ON DELAY



INPUT OFF DELAY

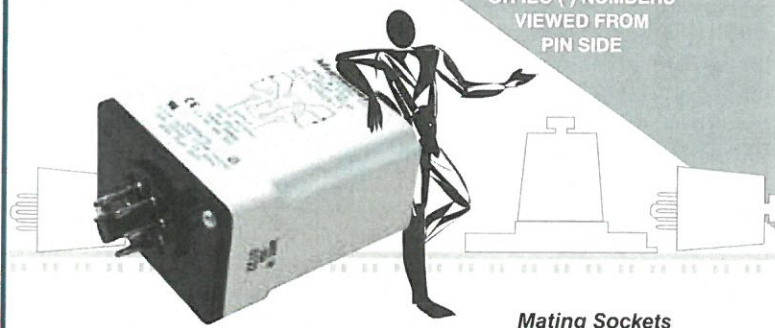
EXTERNAL SWITCH SHALL NOT BE CONNECTED TO ANY EXTERNAL LOAD OR VOLTAGE. DAMAGE TO INTERNAL COMPONENTS MAY OCCUR.

ALTERNATE NEMA OR IEC () NUMBERS VIEWED FROM PIN SIDE

GENERAL SPECIFICATIONS (@ 25°C)

	UNITS	
TIMING		
Functions Available:		On delay, off delay, interval or one shot
Time Scales:		1
Time Range:		0.1 second to 120 minutes
Timing Adjustment:		KNOB
Timing Deviation (mechanical setting):	%	+20
Timing Repeatability (Constant voltage and temperature):	%	0.1
Reset Time:	mS maximum	150
Input Pulse Length:	mS minimum	50
INPUT		
Standard Voltage:		See P/N chart
Input Voltage Tolerance:	VAC 50/60 Hz	85% to 110%,
	VDC	80% to 110%
Power Consumption:	maximum	2.5 VA / 2 W
Transient Protection:		Yes
Reverse Polarity Protection:		Yes
Input Indication:		No
OUTPUT		
Contact Rating AC Amperes (AC1):	VAC 50/60Hz	10 amps resistive @ 240
Contact Rating DC Amperes (DC1):	VDC	10 amps resistive @ 30
Contact Rating Horsepower:	HP @ VAC	1/3 @ 120, 1/2 @ 240
Contact Rating Pilot Duty:		B300
Minimum Load:	mW	500
Contact Material:		Silver alloy
Output Indication:		No
DIELECTRIC STRENGTH		
Across Open Contacts:	V rms	1,000
Input to Contacts:	V rms	2,500
Pole to Pole:	V rms	2,000
TEMPERATURE		
Operating, Lower:	°C	-20
Operating, Upper:	°C	+55
Storage, Lower:	°C	-40
Storage, Upper:	°C	+85
LIFE EXPECTANCY		
Electrical Full Load:	operations	100,000
Mechanical @ no Load:	operations	10,000,000
MISCELLANEOUS		
Operating Position:		Any
Cover Protection Category:	IP	40
Terminals:		SOX = 8 pin octal SRX = 11 pin octal
Weight:	grams	115

THE CLASS 211 TIME DELAY RELAY MAKES USE OF HYBRID CIRCUITRY, COMBINING INTEGRATED CIRCUITS FOR A MULTITUDE OF TIMING FUNCTIONS, AND THE RELIABILITY OF RELAY TECHNOLOGY.



Mating Sockets
70-464-1, 70-750D8-1: SOX, 70-465-1, 70-750D11-1: SRX
See section 7

STANDARD PART NUMBER	NOMINAL INPUT VOLTAGE	TIMING RANGE
ON DELAY, 10 AMP		
211ACPSOX-3	24 VAC	1 TO 180 SECONDS
W211ACPSOX-5	120 VAC	0.1 TO 10 SECONDS
W211ACPSOX-7	120 VAC	1.0 TO 180 SECONDS
W211ACPSOX-8	120 VAC	2.0 TO 300 SECONDS
W211ACPSOX-60	120 VAC	1.0 TO 15 MINUTES
W211ACPSOX-61	120 VAC	2.0 TO 30 MINUTES
W211ACPSOX-62	120 VAC	4.0 TO 60 MINUTES
W211CPSOX-1	24 VDC	0.1 TO 10 SECONDS
W211CPSOX-3	24 VDC	1.0 TO 180 SECONDS
OFF DELAY, 10 AMP		
W211ACPSRX-5	120 VAC	0.1 TO 10 SECONDS
W211ACPSRX-7	120 VAC	1.0 TO 180 SECONDS
W211ACPSRX-8	120 VAC	2.0 TO 300 SECONDS
W211ACPSRX-60	120 VAC	1.0 TO 15 MINUTES
W211CPSRX-1	24 VDC	0.1 TO 10 SECONDS
W211CPSRX-3	24 VDC	1.0 TO 180 SECONDS