

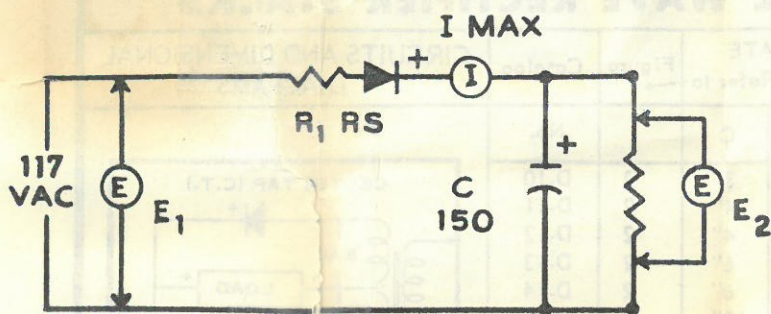
### SELENIUM "Centre-Kooled" RECTIFIER

PATENTS NO. 2618692 & 2620384

PHONES 2-1435-6-7 • 415 NORTH COLLEGE AVENUE • BLOOMINGTON, INDIANA

## SPECIFICATIONS and TYPICAL APPLICATIONS

### HALF WAVE



B+ Power for—

Portable Radio  
AC-DC Radio  
A.M. - F.M. Radio

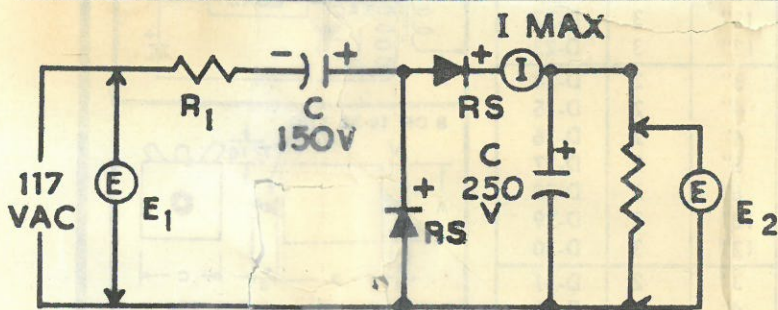
Television  
Electronic Devices

RS MODEL	E1 AC Volt	E2 DC Volt	I Max. DC MA.	CAP Mfd.	R1 Ohms
65	117	130	65	30	22
75	117	130	75	50	22
100	117	130	100	50	22
150	117	125	150	80	15
200	117	130	200	80	5
250	117	130	250	100	5
300	117	130	300	150	5
350A	117	130	350	200	5
*400	117	130	400	200	5
**500	117	130	500	350	5
600	117	125	600	350	5

\*Formerly Model 350

\*\*Formerly Model 450

### VOLTAGE DOUBLER



B+ Power for—

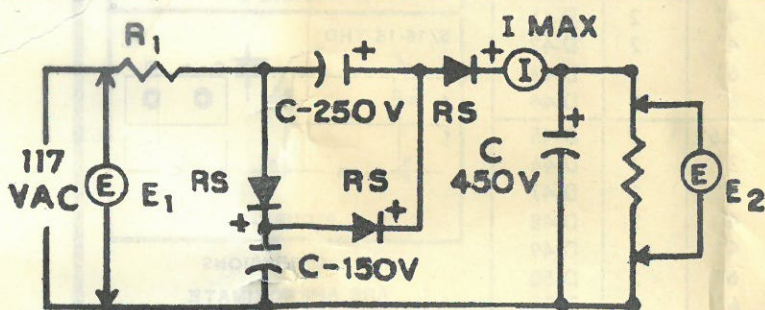
Television  
Console Radio  
Electronic Devices

RS MODEL	E1 AC Volt	E2 DC Volt	I Max. DC MA.	CAP Mfd.	R1 Ohms
65	117	250	65	30	22
75	117	255	75	50	22
100	117	245	100	50	22
150	117	245	150	80	15
200	117	255	200	80	5
250	117	245	250	100	5
300	117	250	300	150	5
350A	117	250	350	200	5
*400	117	240	400	350	5
**500	117	240	500	350	5
600	117	240	600	350	5

\*Formerly Model 350

\*\*Formerly Model 450

### VOLTAGE TRIPLER



B+ Power for—

Television  
Deluxe Radio  
Electronic Devices

RS MODEL	E1 AC Volt	E2 DC Volt	I Max. DC MA.	CAP Mfd.	R1 Ohms
65	117	355	65	30	22
75	117	360	75	50	22
100	117	340	100	50	22
150	117	305	150	80	15
200	117	360	200	80	5
250	117	355	250	100	5
300	117	350	300	150	5
350A	117	350	350	200	5
*400	117	340	400	350	5
**500	117	340	500	350	5
600	117	340	600	350	5

\*Formerly Model 350

\*\*Formerly Model 450

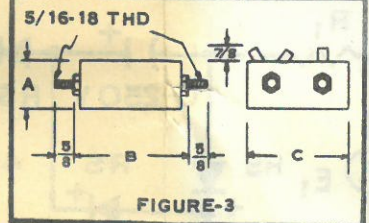
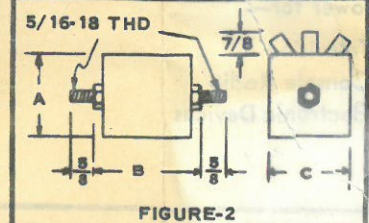
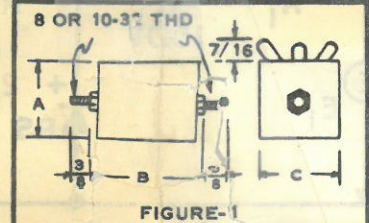
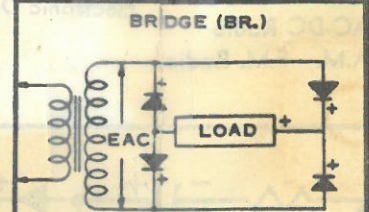
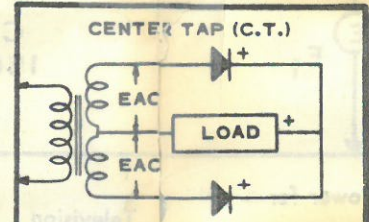
Red washer denotes positive end of rectifier.



## POWER RECTIFIERS IN STOCK

PS-2

SINGLE PHASE — FULL WAVE RECTIFIER STACKS										
DC OUTPUT At 45°C. Amb.		CIRCUIT	Max. AC Input	APPROXIMATE DIMENSIONS—Refer to			Figure	Catalog	CIRCUITS AND DIMENSIONAL DIAGRAMS	
Volts	Max. Amps			Refer to Diagram	Volts	A				
6-10	2	C.T.	13	3"	2½"	3"	2	D-10		
6-10	4	C.T.	13	4"	2½"	4"	2	D-11		
6-10	6	C.T.	13	4"	2½"	4"	2	D-12		
6-10	8	C.T.	13	5"	2½"	6"	2	D-13		
6-10	12	C.T.	13	5"	2½"	6"	2	D-14		
6-10	15	C.T.	13	4¼"	2½"	12"	3	D-15		
6-10	22.5	C.T.	13	4¼"	2½"	12"	3	D-16		
6-20	1.5	BR.	26	2"	1½"	2"	1	D-52		
6-20	2	BR.	26	3"	3⅜"	3"	2	D-17		
6-20	4	BR.	26	4"	3⅜"	4"	2	D-18		
6-20	6	BR.	26	4"	4"	4"	2	D-19		
6-20	8	BR.	26	5"	3⅜"	6"	2	D-20		
6-20	12	BR.	26	5"	4"	6"	2	D-21		
6-20	15	BR.	26	4¼"	3⅜"	12"	3	D-22		
6-20	22.5	BR.	26	4¼"	4"	12"	3	D-23		
20-40	2	BR.	52	3"	4"	3"	2	D-24		
20-40	4	BR.	52	4"	4"	4"	2	D-25		
20-40	6	BR.	52	4"	6⅝"	4"	2	D-26		
20-40	8	BR.	52	5"	4"	6"	2	D-27		
20-40	12	BR.	52	5"	6⅝"	6"	2	D-28		
20-40	15	BR.	52	4¼"	4"	12"	3	D-29		
20-40	22.5	BR.	52	4¼"	6⅝"	12"	3	D-30		
40-60	2	BR.	78	3"	6"	3"	2	D-31		
40-60	4	BR.	78	4"	6"	4"	2	D-32		
40-60	6	BR.	78	4"	8"	4"	2	D-33		
40-60	8	BR.	78	5"	6"	6"	2	D-34		
40-60	12	BR.	78	5"	8"	6"	2	D-35		
40-60	15	BR.	78	4¼"	6"	12"	3	D-36		
40-60	22.5	BR.	78	4¼"	8"	12"	3	D-37		
60-100	.5	BR.	130	1.6"	5⅜"	1.6"	1	D-38		
60-100	1	BR.	130	2"	5⅜"	2"	1	D-39		
60-100	2	BR.	130	3"	8⅜"	3"	2	D-40		
60-100	4	BR.	130	4"	8⅜"	4"	2	D-41		
60-100	6	BR.	130	4"	13¼"	4"	2	D-42		
60-100	8	BR.	130	5"	8⅜"	6"	2	D-43		
60-100	12	BR.	130	5"	13¼"	6"	2	D-44		
100-120	.5	BR.	156	1.6"	6"	1.6"	1	D-45		
100-120	1	BR.	156	2"	6"	2"	1	D-46		
100-120	2	BR.	156	3"	10¼"	3"	2	D-47		
100-120	4	BR.	156	4"	10¼"	4"	2	D-48		
100-120	6	BR.	156	4"	15⅞"	4"	2	D-49		
100-120	8	BR.	156	5"	10¼"	6"	2	D-50		
100-120	12	BR.	156	5"	15⅞"	6"	2	D-51		



ALL DIMENSIONS  
ARE APPROXIMATE

EACH RECTIFIER IS ATTRACTIVELY AND INDIVIDUALLY BOXED TO INSURE SAFE TRANSIT AND STORAGE. A FREE INSTRUCTION BOOKLET IS ALSO INCLUDED.