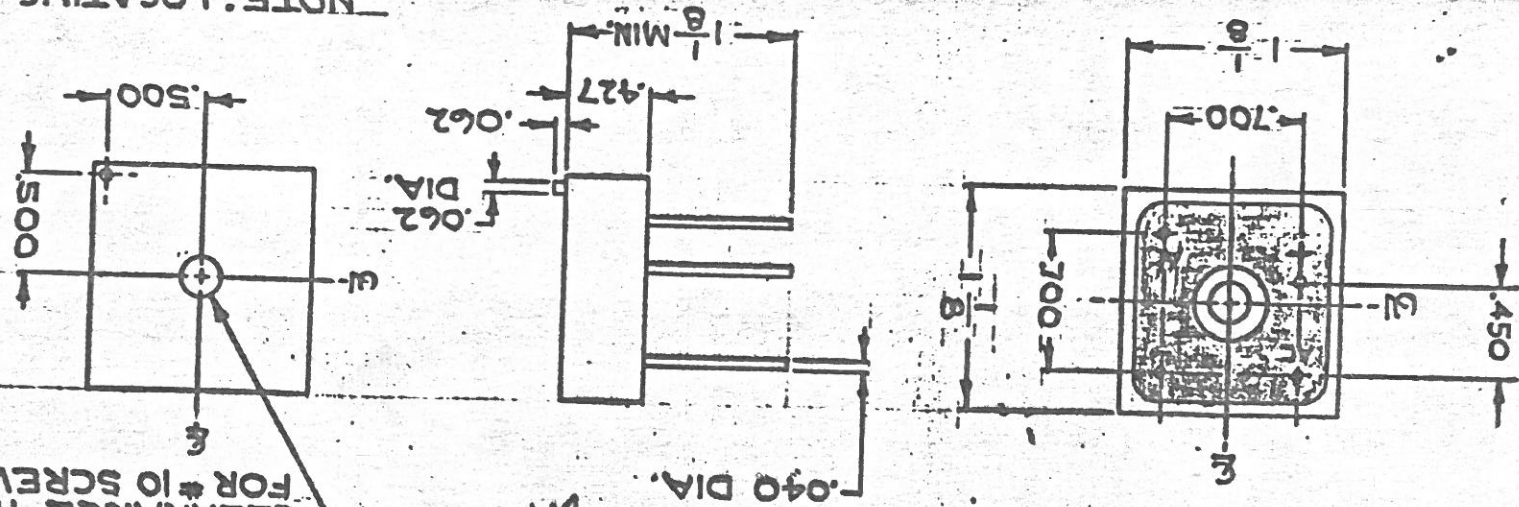


CLEARANCE HOLE FOR #10 SCREW



NOTE: LOCATING PIN IS OPTIONAL.

ELECTRICAL CHARACTERISTICS: 60HZ, 25°C

Parameter	57012-05	57012-1	57012-2	57012-4	57012-6	57012-8	57012-10
MAX. PEAK INVERSE VOLTAGE (VOLTS)	50	100	200	400	600	800	1000
MAX. RMS VOLTAGE (VOLTS)	35	70	140	280	420	560	700
MAX. DC CURRENT (AMPS) @ 55°C CASE							
MAX. VOLTAGE DROP (EACH SECTION VOLT @ 12A)							
MAX. CASE TEMPERATURE, OPERATING & STORAGE							
MAX. ONE CYCLE SURGE CURRENT (PEAK AMPS)							
MAX. LEAKAGE CURRENT @ RATED PIV (uA DC)							
MAX. WATTAGE DISSIPATED (REF. CURVE RA-6128)							

SARKES TARZIAN INC. SEMICONDUCTOR DIVISION BLOOMINGTON, IND.

57012

DATE	BY	REVISIONS
57	KAT	4-16
	MLG	4-17
		75

REVISIONS  
 A) 55°C CASE WAS 25°C CASE 3-8-72  
 B) 1/8 MIN. WAS 1/2 MIN. TJR (CAF) 1-10-80

RA-6827  
 DWG. NO.  
 UNLESS OTHERWISE SPECIFIED DIMENSIONS AND INCHES TOLERANCES ON FRACTIONS ± .015 ANGLES ± .37

REV. B