

# BECKMAN

MADE IN JAPAN

## Digidial®

### URNS-COUNTING DIALS

#### MODELS 2155, 2157, 2165, 2167, 2255, 2257, 2265, AND 2267

#### GENERAL DESCRIPTION

Beckman Digidial® Turns-Counting Dials are a family of dials which read shaft revolutions directly in numbers. The 2150 and 2160 Series dials are three-digit versions and have a ten-turn counting capacity. The 2250 and 2260 Series dials provide four digits and have a one-hundred turn counting capacity.

All of the dials have identical resolution. Hundredths of a turn are denoted by the digit on the rightmost, or centimal wheel with adjacent graduation lines, denoting every 1/500th of a turn. The second digit from the right indicates tenths of a turn and the remaining digit(s) denotes full turns.

Clockwise rotation of the Adjusting Knob results in an increasing indication of the digital display

#### INSTALLATION INSTRUCTIONS

The following instructions apply to the installation of the Digidial Turns-Counting Dial to 1/4-inch and 6 mm shaft diameter potentiometers which meet the physical specifications detailed in this document.

1. Locate and drill holes into the panel for mounting the potentiometer. Refer to the appropriate manufacturer's instructions.
2. Locate and drill hole into the mounting panel to accommodate the dial's antirotational lug. Refer to the illustration detailing the panel hole dimensions.
3. Install the potentiometer following the manufacturer's instructions. Use the mounting hardware provided with the potentiometer.
4. Turn the potentiometer shaft against its counterclockwise stop.
5. Set the dial to a digital reading of "all zeroes five," i.e., 005 or 0005.
6. Remove the dial Adjusting Knob by pulling the knob straight out.

©1983 Beckman Instruments, Inc.

Beckman Japan, Ltd.

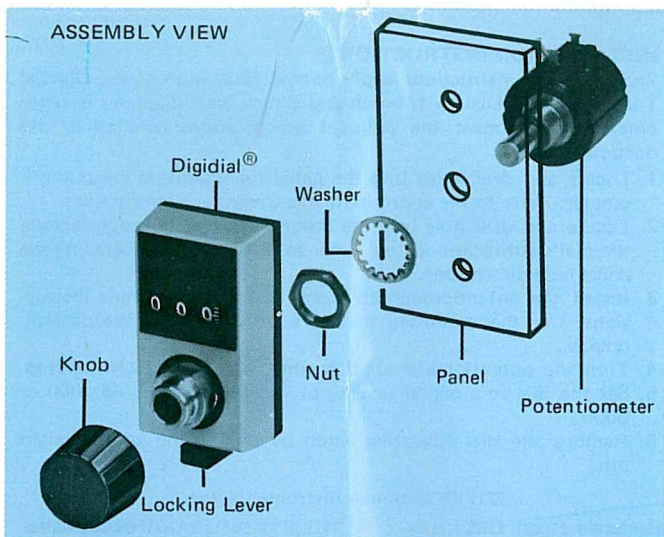
Tokyo, Japan

Beckman Electronics Technologies (BET)

7. With the Locking Lever in OFF (left) position, slip the dial over the potentiometer shaft. Be sure that the antirotational lug of the dial has engaged into the hole drilled for it in the mounting panel. The dial should seat lightly against the mounting panel.
8. Tighten the setscrews (.050-inch across flats Allen wrench) until a very slight drag on the shaft is felt. Turn the Adjusting Knob very slowly, counterclockwise, until the dial reads "all zeroes," i.e., 000 or 0000. Tighten the setscrews firmly. Note that when the dial reading is "all zeroes," the setscrews are 90° apart, positioned at three and six o'clock.
9. Replace the Adjusting Knob on the dial by matching flats on the knob and hub, keying these two parts together.

#### NOTE

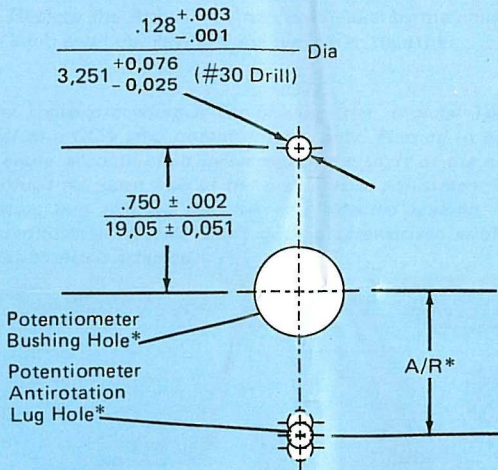
*The above procedure is for phasing the Digidial Turns-Counting Dial to a CCW stop potentiometer, only. Phasing to other relations is easily accomplished by accessing the shaft of the potentiometer through the open hub of the dial. Precise adjustment is possible by setting and locking the dial at a selected reading, then turning potentiometer slotted shaft with a screwdriver until the desired relationship is attained.*



SPECIFICATIONS	MODELS	
	2155, 2165 2255, 2265	2157, 2167 2257, 2267
Used on Shaft Diameter	6 mm	.250-in
Minimum/maximum shaft extension allowed beyond front of panel	<u>.650/.800 (in)</u> 16.510/20.320 (mm)	
Maximum bushing extension allowed beyond front of panel	<u>.310 (in)</u> 7.874 (mm)	
Maximum bushing diameter allowed	<u>.470 (in)</u> 11.938 (mm)	
Maximum potentiometer mounting hardware diameter allowed	<u>.670 (in)</u> 17.018 (mm)	
Maximum hardware height above front panel	<u>.150 (in)</u> 3.810 (mm)	
Body size	<u>1.00 W x 1.75 L (in)</u> 25.40 W x 44.45 L (mm)	
Extension beyond front of panel	<u>1.00 (in)</u> 25.40 (mm)	
Weight	<u>1.5 (oz)</u> 42.5 (g)	

# PANEL HOLE DIMENSIONS

Dimensions  
Inch/mm



DRAWING TO SCALE

\* Refer to potentiometer manufacturer's installation instructions.