

**Dielectric Strength**

UL/CSA: 1000V (minimum)

**Base Material**

Steel/Zinc Plate

**Insulation Resistance**

100 Megohms (minimum)

**Actuator Material**

Brass/Nickel Plate

**700-1A - BL**

<sup>1</sup>  
Base Part Number

<sup>2</sup>  
Knob Color

**1 BASE PART NUMBER: SERIES / POLES / CIRCUITRY <sup>1</sup> / RATING / TERMINATION <sup>2</sup>**  
**2A 250VAC; 4A 125VAC; 1A 125V**

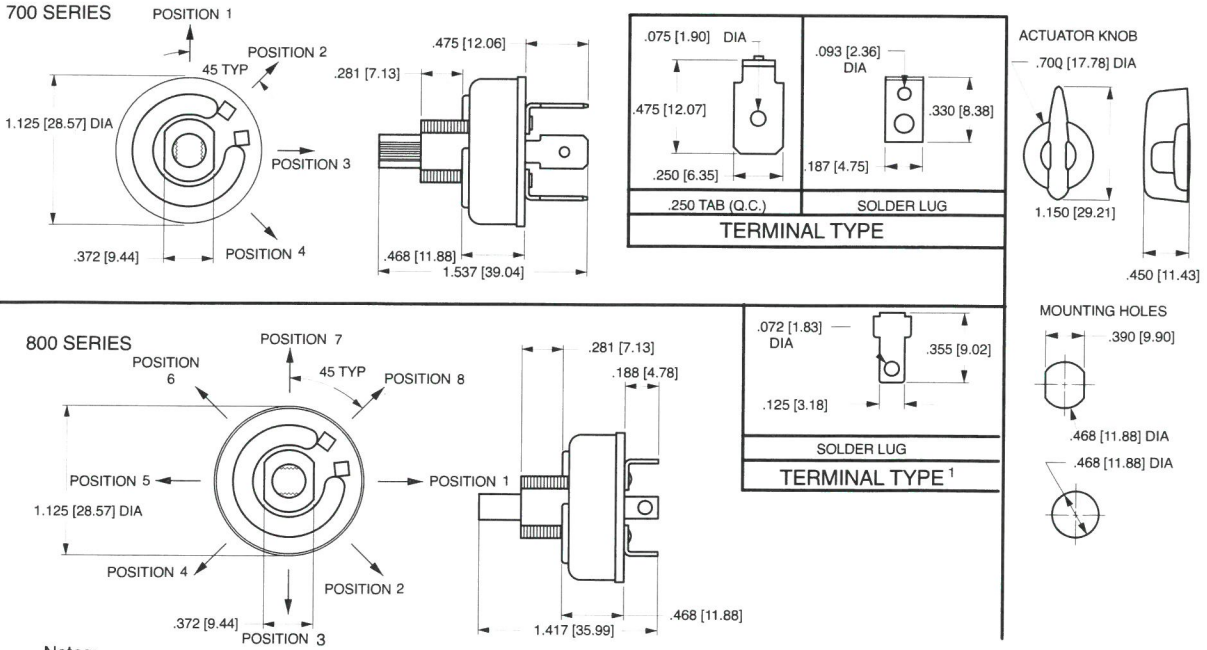
Solder Lugs	.250 Tabs	Position 1	Position 2	Position 3	Position 4	
-	<b>700-A</b>	OFF	ON	ON	ON	
<b>700-1</b>	<b>700-1A</b>	OFF	ON	-	-	
<b>700-2</b>	<b>700-2A</b>	OFF	ON	ON	ON	repeating for 8 positions
<b>700-3</b>	<b>700-3A</b>	OFF	ON	ON	OFF	
<b>700-4</b>	<b>700-4A</b>	OFF	ON	ON	-	
<b>700-5</b>	<b>700-5A</b>	OFF	ON	OFF	-	
<b>700-6</b>	<b>700-6A</b>	-	ON	OFF	ON	
<b>700-7</b>	<b>700-7A</b>	-	ON	ON	-	
<b>700-8</b>	<b>700-8A</b>	-	ON	ON	ON	
<b>700-9</b>	<b>700-9A</b>	OFF	ON	OFF	ON	

**3A 250VAC; 6A 125VAC**

Switch Positions	OFF Position	
<b>800-2</b>	2 positions	<b>800-A</b> 1st position
<b>800-3</b>	3 positions	<b>800-A2</b> 2nd position
<b>800-4</b>	4 positions	<b>800-A3</b> 3rd position
<b>800-5</b>	5 positions	<b>800-A4</b> 4th position
<b>800-6</b>	6 positions	<b>800-A5</b> 5th position
<b>800-7</b>	7 positions	<b>800-A6</b> 6th position
<b>800-8</b>	8 positions	<b>800-A7</b> 7th position
		<b>800-A8</b> 8th position

**2 ACTUATOR COLOR**  
**BL** Black

- Notes:  
 1 700-2 and 700-2A feature 8 detent positions.  
 2 800-Series terminal is a combination solder lug and quick connect.



- Notes:  
 1. Terminal is combination solder lug and quick connect.

\*Manufacturer reserves the right to change product specification without prior notice.