



General Purpose Gauges

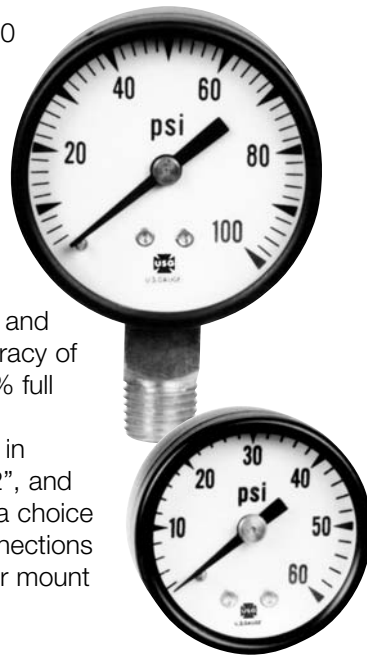
Series P-500 Low Cost Utility Gauges

DESCRIPTION

U.S. Gauge Series P-500 utility gauges provide economical, reliable service in a wide variety of applications including pumps, compressors, and other equipment.

Series P-500 utility gauges come in English and metric ranges with accuracy of either $\pm 3-2-3\%$ or $\pm 1.6\%$ full scale.

Gauges are available in 1-1/2", 2", 2-1/2", 3-1/2", and 4-1/2" steel cases with a choice of English or metric connections in center-back and lower mount configurations.



SPECIFICATIONS

RANGES: 30" Hg VAC through 0-5000 psi

ACCURACY: $\pm 3-2-3\%$ (Grade B) or $\pm 1.6\%$ of span

BOURDON TUBE: Phosphor bronze

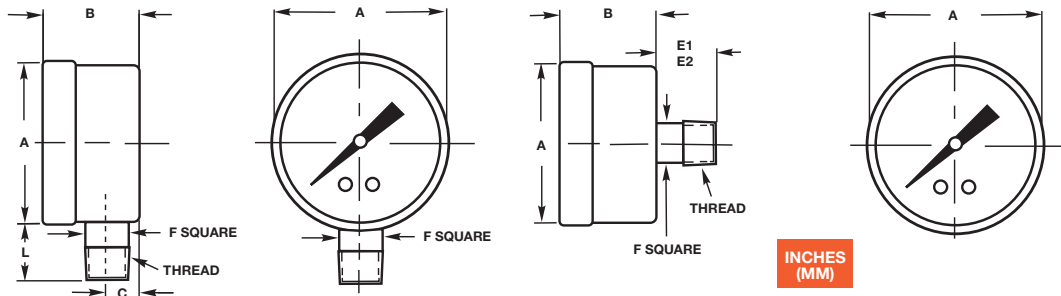
DIAL: ABS (aluminum optional)

POINTER: Aluminum

CASE: Painted steel

CONNECTION:

Brass, 1/8-27 NPT for 1-1/2" and 2"; 1/4-18 NPT for 2" through 4-1/2"; G1/8B, G1/4B, R1/8, R1/4, center-back or lower mount



MODEL NUMBER	DIAL SIZE	UNIT	A	B	C	E1	E2	F	L
P-500	1-1/2"	inches	1.64	.92	.34	.62	-	.44	.55
		mm	41.66	23.37	8.66	15.75	-	11.18	13.97
P-500	2"	inches	2.16	1.15	.40	.84	.90	.55	.87
		mm	54.86	29.21	10.16	21.34	22.86	13.97	22.10
P-505	2-1/2" LM	inches	2.73	1.15	.39	.48	.25	.82	-
		mm	69.34	29.21	9.91	12.19	6.35	20.83	-
P-505	2-1/2" CBM	inches	2.49	1.21	1.22	-	.28	.84	-
		mm	63.25	30.73	30.99	-	7.11	21.34	-
P-505	3-1/2" LM	inches	3.53	1.17	.40	-	.24	.83	-
		mm	89.66	29.72	10.16	-	6.10	21.08	-
P-505	4-1/2" LM	inches	4.80	1.12	.38	-	.45	1.10	-
		mm	121.92	28.45	9.65	-	11.43	27.94	-

* Length E1 refers to 1/8 NPT connections; E2 refers to 1/4 NPT connections

** The E dimension is the minimum length of the wrench square from the case bottom

© 2006, by AMETEK, Inc. All rights reserved. PDF606 (160126) Specifications are subject to change without notice. Visit our Web sites for the most up-to-date information.



For Gauges/Thermometers:

U.S. GAUGE
820 Pennsylvania Blvd.
Feasterville, PA 19053 U.S.A.
Tel: (215) 355-6900
Fax: (215) 354-1802
www.ametekusg.com

Customer Service Tel: (863) 534-1504
Customer Service Fax: (863) 533-7465

For Electronic Products:

PMT PRODUCTS
820 Pennsylvania Blvd.
Feasterville, PA 19053 U.S.A.
Tel: (215) 355-6900
Fax: (215) 354-1800
www.ametekusg.com

For Diaphragm Seals:

M&G PRODUCTS
8600 Somerset Drive
Largo, FL 33773 U.S.A.
Tel: (727) 536-7831
Fax: (727) 539-6882
www.ametek.com/tci





General Purpose Gauges

Series P-500 Low Cost Utility Gauges

SPEC NUMBER SELECTION GUIDE

Series P-500

Connection	Range*	1-1/2" Spec No.	2" Spec No.	2-1/2" Spec No.	3-1/2" Spec No.	4-1/2" Spec No.	
1/8-27 LM	15 psi	146000A	052420A	-	-	-	
	30 psi	166327	163931	059306A	-	-	
	60 psi	146002A	164005	058129A	-	-	
	100 psi	166318	163271	049660A	-	-	
	160 psi	146004A	048302A	048536A	-	-	
	200 psi	166777	046645A	050852A	-	-	
	300 psi	146006A	048363A	046647A	-	-	
	600 psi	146007A	-	-	-	-	
	1000 psi	146008A	-	-	-	-	
	2000 psi	146009A	-	-	-	-	
1/8-27 CBM	15 psi	146010A	-	-	-	-	
	30 psi	166320	163930	-	-	-	
	60 psi	166321	055155A	-	-	-	
	100 psi	166322	046776A	-	-	-	
	160 psi	166323	070791A	-	-	-	
	200 psi	146015A	102673A	-	-	-	
	300 psi	146016A	051805A	-	-	-	
	600 psi	146017A	-	-	-	-	
	1000 psi	146018A	-	-	-	-	
	2000 psi	146019A	-	-	-	-	
1/4-18 LM	15 psi	-	047615A	047102A	5502A	5546A	
	30 psi	-	163149	163278	168536	5804A	
	60 psi	-	163269	163279	168537	5551A	
	100 psi	-	162988	163280	168538	5554A	
	160 psi	-	163270	163281	168539	5559A	
	200 psi	-	163147	163282	168540	5561A	
	300 psi	-	163148	163283	168541	5563A	
	400 psi	-	047492A	049611A	5515A	12265A	
	600 psi	-	047493A	046648A	5516A	5337A	
	1000 psi	-	047494A	047496A	5519A	12266A	
	2000 psi*	-	-	171398A	-	-	
	3000 psi*	-	-	171400A	-	-	
	5000 psi*	-	-	143072A	-	-	
1/4-18 CBM	15 psi	-	046987A	052827A	-	-	
	30 psi	-	163949	165213	-	-	
	60 psi	-	163272	165214	-	-	
	100 psi	-	163273	163284	-	-	
	160 psi	-	163274	163285	-	-	
	200 psi	-	163275	163286	-	-	
	300 psi	-	163276	163287	-	-	
	600 psi	-	046991A	050851A	-	-	
	1000 psi	-	-	050870A	-	-	
	2000 psi*	-	-	171399A	-	-	
	3000 psi*	-	-	171401A	-	-	
	1/8-27 LM	30" - 15 psi	-	66662A	-	-	-
		30" - 60 psi	-	47925A	-	-	-
30" - 150 psi		-	49609A	-	-	-	
1/4-18 LM	30" - 15 psi	-	47000A	47001A	5493A	63754A	
	30" - 30 psi	-	167218	47105A	5495A	5549A	
	30" - 60 psi	-	57548A	46646A	5496A	12290A	
	30" - 150 psi	-	50517A	47411A	5499A	12292A	
	30" - 300 psi	-	-	58156A	15936A	-	
1/8-27 LM	30"	146020A	47225A	-	-	-	
1/8-27 CBM	30"	146021A	-	-	-	-	
1/4-18 LM	30"	-	163712	171222A	171223A	5333A	

* Dual scale dials are available, please contact Customer Service at (863) 534-1504
 U-clamp kit for 1-1/2" P-500, Spec #166732

© 2006, by AMETEK, Inc. All rights reserved. PDF606 (160126) Specifications are subject to change without notice. Visit our Web sites for the most up-to-date information.



For Gauges/Thermometers:

U.S. GAUGE
 820 Pennsylvania Blvd.
 Feasterville, PA 19053 U.S.A.
 Tel: (215) 355-6900
 Fax: (215) 354-1802
 www.ametekusg.com

Customer Service Tel: (863) 534-1504
 Customer Service Fax: (863) 533-7465

For Electronic Products:

PMT PRODUCTS
 820 Pennsylvania Blvd.
 Feasterville, PA 19053 U.S.A.
 Tel: (215) 355-6900
 Fax: (215) 354-1800
 www.ametekusg.com

For Diaphragm Seals:

M&G PRODUCTS
 8600 Somerset Drive
 Largo, FL 33773 U.S.A.
 Tel: (727) 536-7831
 Fax: (727) 539-6882
 www.ametek.com/tci

