



Current Sensors - D18XX, CS1XXX Series



Designed for use above 20 kHz, these sensors function as the secondaries of a current transformer. The conductor carrying the current to be measured is the "one turn primary." Sensitivity can be set at 1 Volt per Ampere or at other desired values. It can also be doubled by looping the conductor through the hole twice. Applications include sensing branch circuit overload, switcher feedback, and detecting load drop or shutdown.

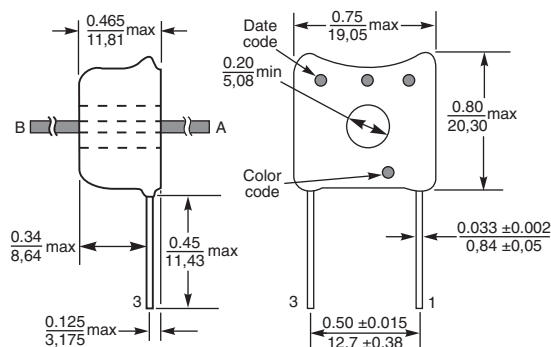
They come in a molded version (CS1XXX Series) or encapsulated model (D18XX Series).

Coilcraft **Designer's Kit P403** contains samples of the CS1050, 1100 and 1200 sensors, current transformer versions with equivalent ratings, plus two 50/60 Hz current sensors. To order, contact Coilcraft or visit <http://order.coilcraft.com>.

Part number	Turns	Inductance (mH)	Sensed current I_{in} max (A)	Sensitivity		Terminating resistor R_T (Ohms) ¹	Color code
				V_{out} (V)	I_{in} (A)		
D1869L	50	5	10	1	1	50	Green
D1870L	100	20	24	1	1	100	Brown
D1871L	200	100	35	1	1	200	Red
CS1050L	50	5	10	1	1	50	
CS1100L	100	20	24	1	1	100	
CS1200L	200	100	35	1	1	200	
CS1750L	750	1125	30	1	1	750	

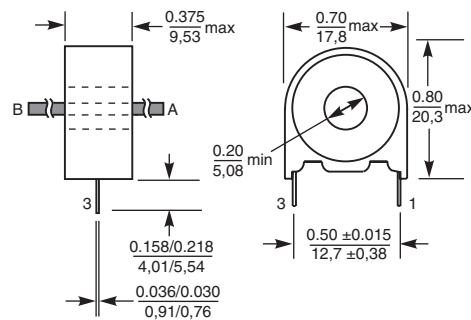
1. Varying terminating resistance will increase or decrease output Voltage/Ampere in conductor.
2. Operating temperature range -40°C to +85°C.
3. Electrical specifications at 25°C.

D1xx Series



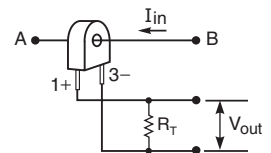
Terminations: Tin-silver over copper
Weight: 4.0 – 4.5 g

CS1xxx Series



Terminations: Tin-silver over copper
Weight: 5.3 – 5.8 g

Typical Circuit



Leads 3 and A are in phase per orientation shown above.

Coilcraft®

Specifications subject to change without notice.
 Please check our website for latest information.

Document 131 Revised 12/14/07

1102 Silver Lake Road Cary, Illinois 60013 Phone 847/639-6400 Fax 847/639-1469
 E-mail info@coilcraft.com Web <http://www.coilcraft.com>