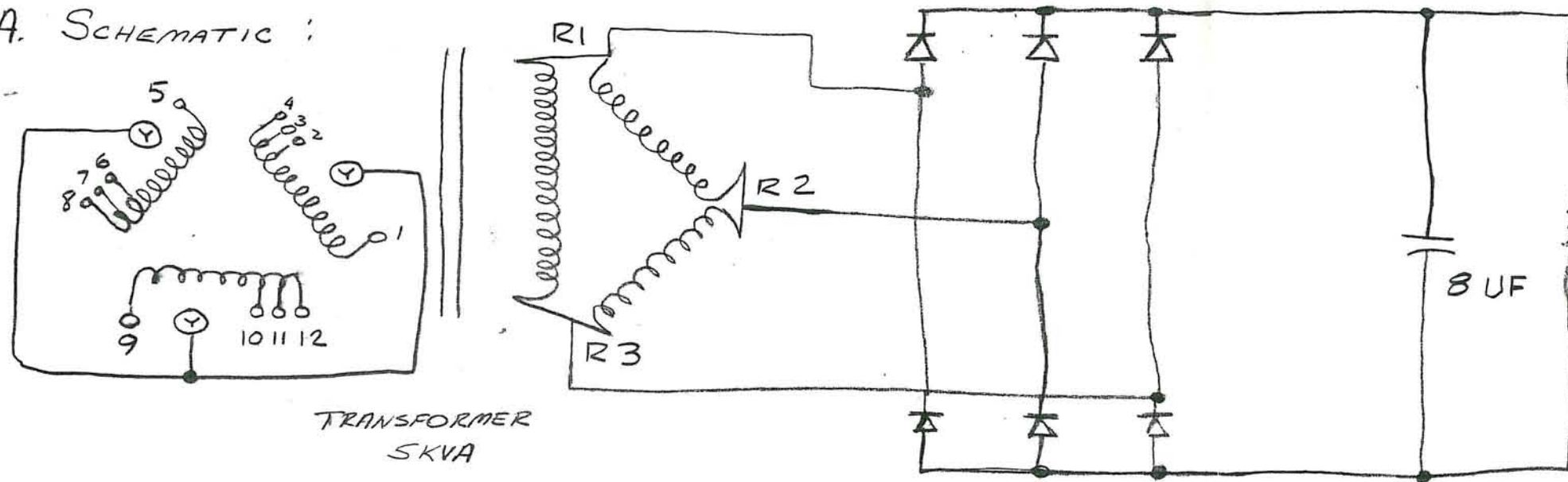
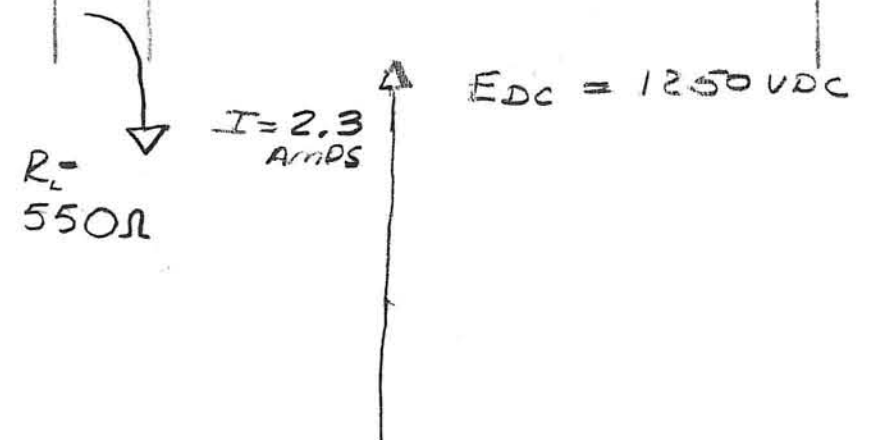


A. SCHEMATIC:



REVISIONS			
LTR	DESCRIPTION	DATE	APVD
A	DCN 2531 INC	DCF 1/9/76	BAD 1-13-76



B. INPUT/OUTPUT REQUIREMENTS:

- INPUT FREQUENCY 47 HZ MIN, 63 HZ MAX, 3Φ CONNECTIONS:

	PRIMARY VOLTS	LINKS	INPUT LINES
DELTA CONN.	208	2-9, 6-1, 10-5	9-1-5
	220	3-9, 7-1, 11-5	9-1-5
	254	4-9, 8-1, 12-5	9-1-5
Y CONN.	360	Y-9, Y-1, Y-5	2-6-10
	380	Y-9, Y-1, Y-5	3-7-11
	440	Y-9, Y-1, Y-5	4-8-12

C. MECHANICAL CONFIGURATION:

- OPEN FRAME CONSTRUCTION WITH MOUNTING FEET (SEE SH. 2)
- VACUUM IMPREGNATED
- STUD TERMINATIONS, MARKED.
- TEMPERATURE: -30°C TO 50°C
- HUMIDITY: TO 95%
- ALTITUDE: TO 13,500 FT.
- VIBRATION & SHOCK: NORMAL SHIPPING
FIXED STATION USE.

ENG. COPY

2. OUTPUT VOLTAGE

RMS SECONDARY LINE TO LINE = 990 Δ VOLTS, 2.29A, 3.82 KVA

3. Hi Pot: INDUSTRY STANDARD.

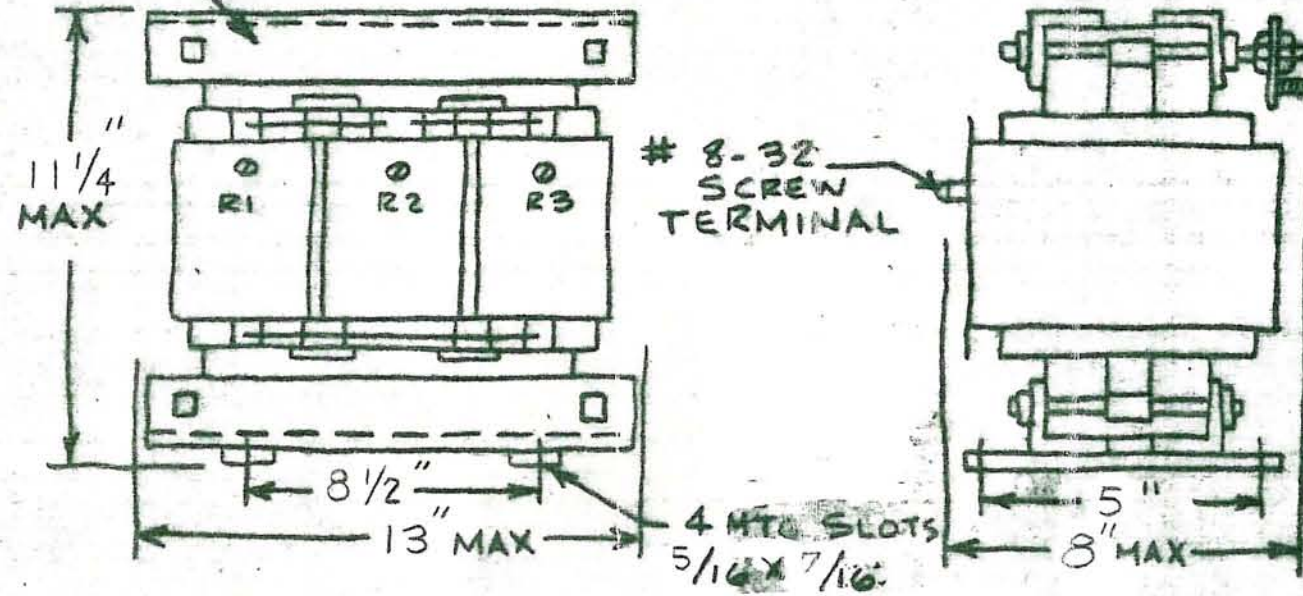
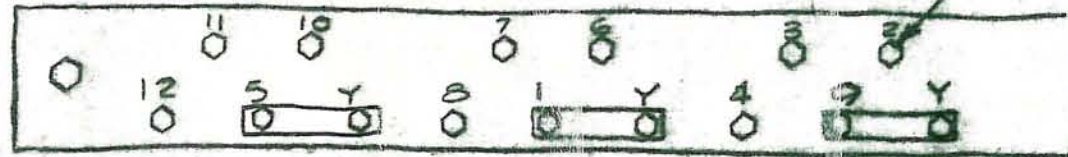
FRAME OF UNIT IS GROUNDED.

JUL 18 1983

DR <i>RS</i> 4/11/75	DATE	SCIENTIFIC RADIO SYSTEMS INC. ROCHESTER, NEW YORK		
ENGR <i>RS</i>	3/11/75	TITLE TRANSFORMER, SCREEN SUPPLY		
APPD <i>RK</i>	3/22/74	SIZE B	CODE IDENT NO. 151808	DRAWING NO. 151808
CONTR NO. <i>777</i>	REL DATE 3/26/74	APPROVED	SCALE NONE	WEIGHT
APPROVED		REV A	SHEET 1 OF 2	

STAMP VENDOR'S NAME,
PART NO., S.R.S. PART
NO. & DATE OF
MANUFACTURE

VIEW A-A OF PRIMARY TERMINALS #10-32 TERM. STUD



ENG. COPY

JUL 18 1983

DATE		SCIENTIFIC RADIO SYSTEMS INC.			
CHK		ROCHESTER, NEW YORK			
ENGR		TITLE TRANSFORMER,			
APPD		SCREEN SUPPLY			
CONTR NO.	REL DATE	SIZE	CODE IDENT NO.	DRAWING NO.	REV
		B		151808	
OSGN ACTIVITY APPROVAL		SCALE	WEIGHT	SHEET 2 OF 2	
APPROVED					