



ELECTRICAL CONNECTION DIAGRAMS

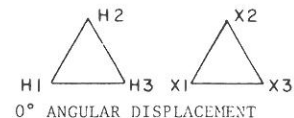
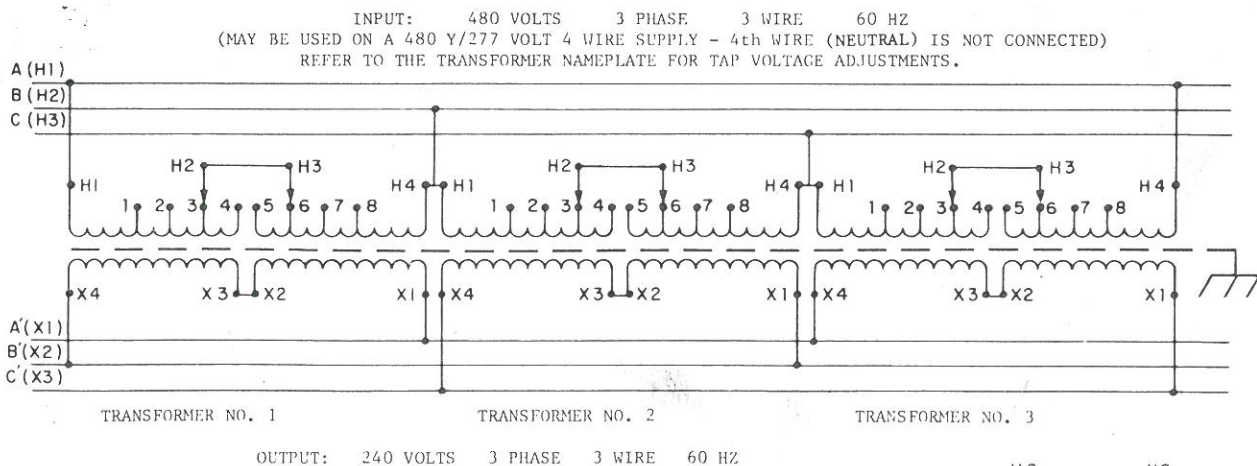
The electrical connection diagram illustrates how to use single phase transformers for three phase applications.

FIRST, Determine the voltage the installation requires. Example: Input 480V, 3 Phase; Output 208Y/120V, 3 Phase, 4 wire.

SECOND, Find the transformer catalog number shown on the connection diagram, which matches the transformer you are installing. This tabulation will show you the number of transformers required, the KVA, and ampere capacity of the installation.

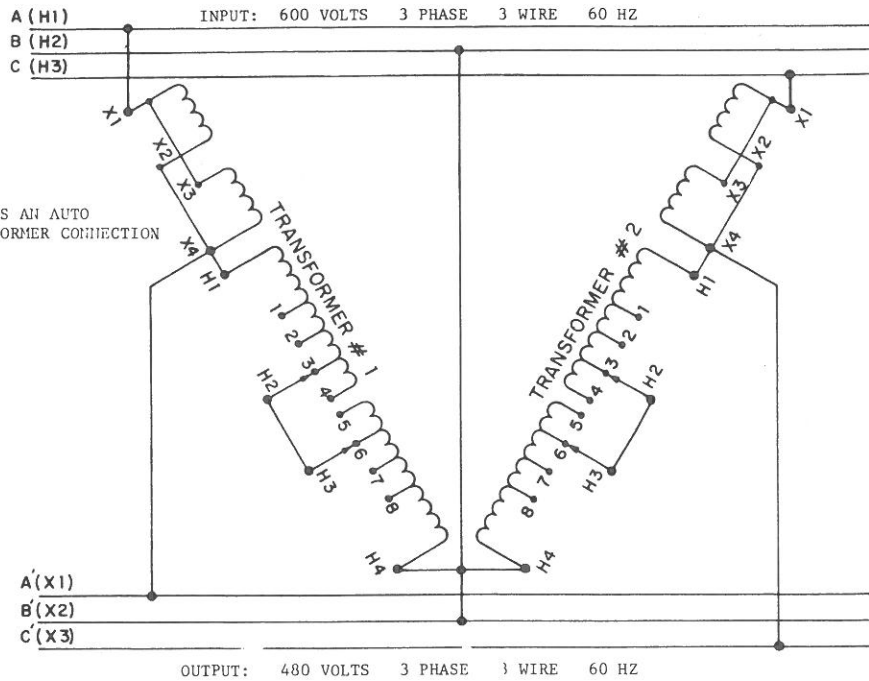
In the connection diagram employing auto transformer connections, the KVA rating is considerably larger than the sum of the nameplate KVA ratings of the individual transformers. An auto transformer connection is made when the transformer primary (terminals having H markings) and secondary (terminals having X markings) are joined together.

For overcurrent protection, grounding and other installation requirements, refer to the National Electrical Code, Articles 240, 250 and 450 and other appropriate sections. Likewise, local codes are to be observed.



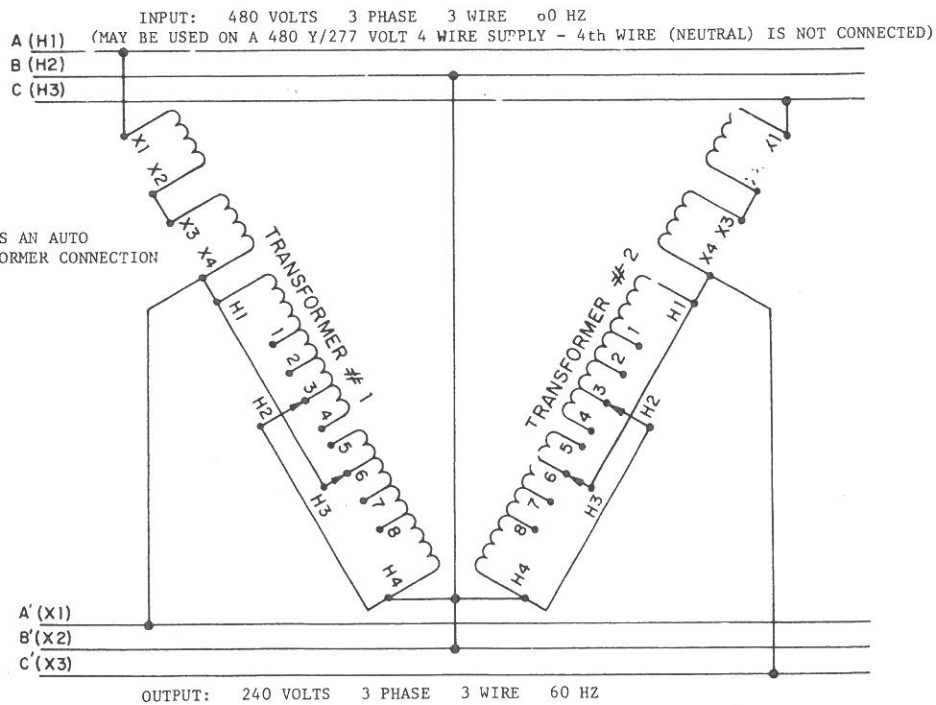
Catalog No.	Nameplate KVA Per Transformer	Number of Trans. Req'd.	3 Phase KVA	Full Load	
				3 Phase Amps @ 240V	480V
T-2-53019-3S	37.5	3	112.5	270	135
T-2-53020-3S	50	3	150	360	180
T-2-53021-3S	75	3	225	541	270
T-2A-53022-3S	100	3	300	721	360
T-1-53023-3S	167	3	500	1202	601
T-2-53024-3S	250	3	750	1803	901

NOTE: INPUTS AND OUTPUTS MAY BE REVERSED; KVA CAPACITY REMAINS CONSTANT.



Catalog No.	Nameplate KVA Per Transformer	Number of Trans. Req'd.	3 Phase KVA	Full Load 3 Phase Amps @	
				480V	600V
T-2-53019-3S	37.5	2	324	390	312
T-2-53020-3S	50	2	432	519	416
T-2-53021-3S	75	2	650	781	625
T-2A-53022-3S	100	2	865	1040	833
T-1-53023-3S	167	2	1445	1738	1391
T-2-53024-3S	250	2	2164	2602	2083

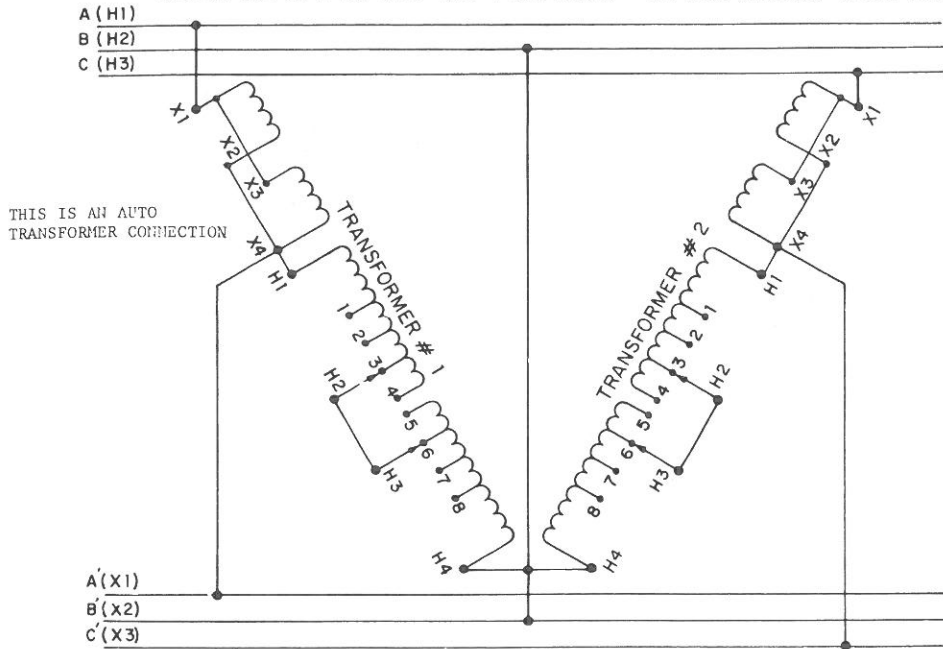
INPUT AND OUTPUT MAY BE REVERSED; KVA CAPACITY REMAINS CONSTANT.



Catalog No.	Nameplate KVA Per Transformer	Number of Trans. Req'd.	3 Phase KVA	Full Load 3 Phase Amps @	
				240V	480V
T-2-53019-3S	37.5	2	130	313	156
T-2-53020-3S	50	2	173	416	208
T-2-53021-3S	75	2	259	623	311
T-2A-53022-3S	100	2	346	833	416
T-1-53023-3S	167	2	578	1392	696
T-2-53024-3S	250	2	865	2083	1041

INPUT AND OUTPUT MAY BE REVERSED; KVA CAPACITY REMAINS CONSTANT.

INPUT: 480 VOLTS 3 PHASE 3 WIRE 50/60 HZ
 (MAY BE USED ON A 480 Y/277 VOLT 4 WIRE SUPPLY - 4th WIRE (NEUTRAL) IS NOT CONNECTED)



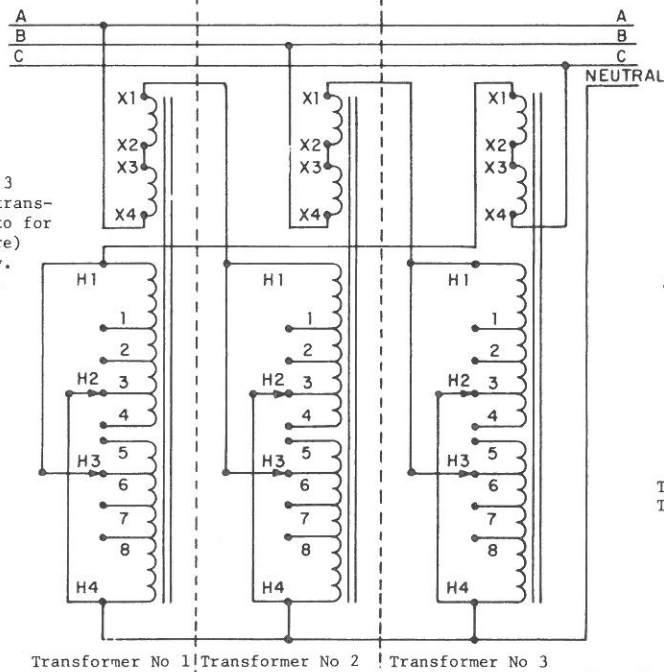
OUTPUT: 380 VOLTS 3 PHASE 3 WIRE 50/60 HZ

Catalog No.	Nameplate KVA Per Transformer	Number of Trans. Req'd.	3 Phase KVA	Full Load 3 Phase Amps @	
				380V	480V
T-2-53019-3S	37.5	2	259	393	212
T-2-53020-3S	50	2	345	524	416
T-2-53021-3S	75	2	519	788	625
T-2A-53022-3S	100	2	692	1051	833
T-1-53023-3S	167	2	1156	1756	1391
T-2-53024-3S	250	2	1731	2629	2083

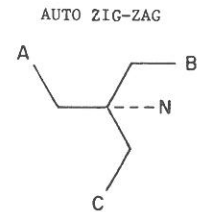
INPUT AND OUTPUT MAY BE REVERSED; KVA CAPACITY REMAINS CONSTANT.

INPUT 480V 3 PHASE
3 WIRE 50/60 HZ

Connection diagram for using 3 pieces of 1 phase, 60 cycle transformers connected zig-zag auto for developing a neutral (4th wire) from a 3 phase, 3 wire supply. For installation information, see National Electrical Code Article 450-4.



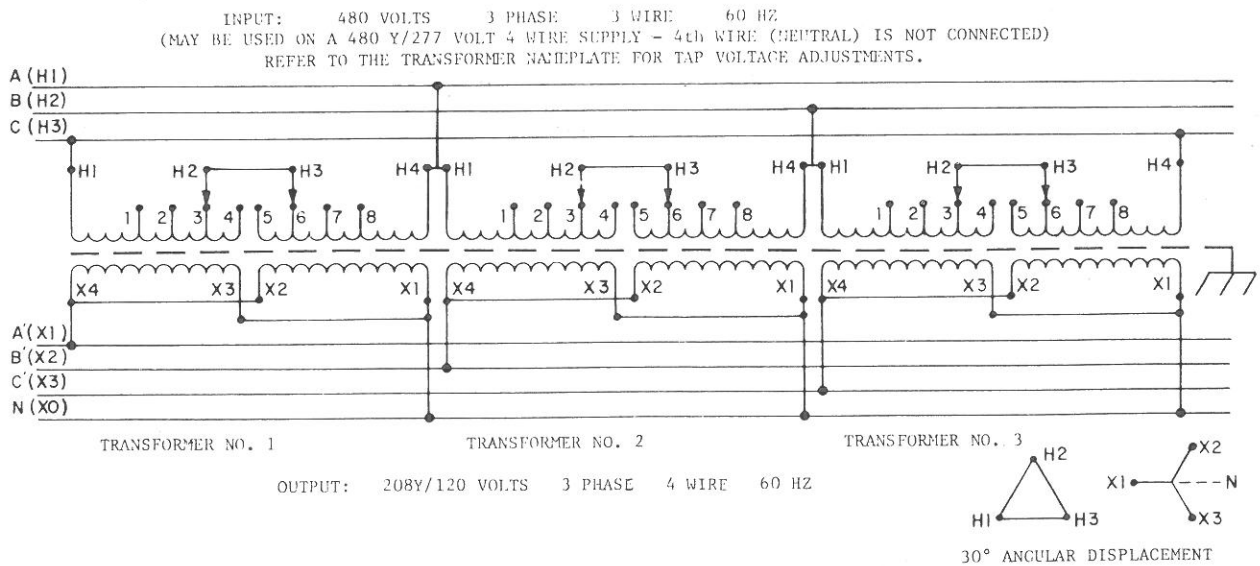
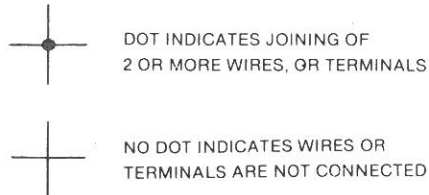
OUTPUT 480V/277V
3 PHASE 4 WIRE 50/60HZ



THIS IS AN AUTO TRANSFORMER CONNECTION

Catalog No.	Nameplate KVA Per Transformer	Number of Trans. Req'd.	Max. Continuous Load (KVA) Per Phase (277 Volts)	Max. Continuous Amp Load Per Phase (277 Volts)
T-2-53019-3S	37.5	3	130	468
T-2-53020-3S	50	3	173	625
T-2-53021-3S	75	3	260	935
T-2A-53022-3S	100	3	346	1250
T-1-53023-3S	167	3	578	2085

LEGEND FOR INTERPRETATION OF CONNECTION DIAGRAMS



Catalog No.	Nameplate KVA Per Transformer	Number of Trans. Req'd.	3 Phase KVA	Full Load 3 Phase Amps @	
				208V	480V
T-2-53019-3S	37.5	3	112.5	312	135
T-2-53020-3S	50	3	150	416	180
T-2-53021-3S	75	3	225	624	270
T-2A-53022-3S	100	3	300	832	360
T-1-53023-3S	167	3	500	1387	601
T-2-53024-3S	250	3	750	2084	901

NOTE: INPUTS AND OUTPUTS MAY BE REVERSED: KVA CAPACITY REMAINS CONSTANT.

†Trademarks of Acme Electric Corporation.