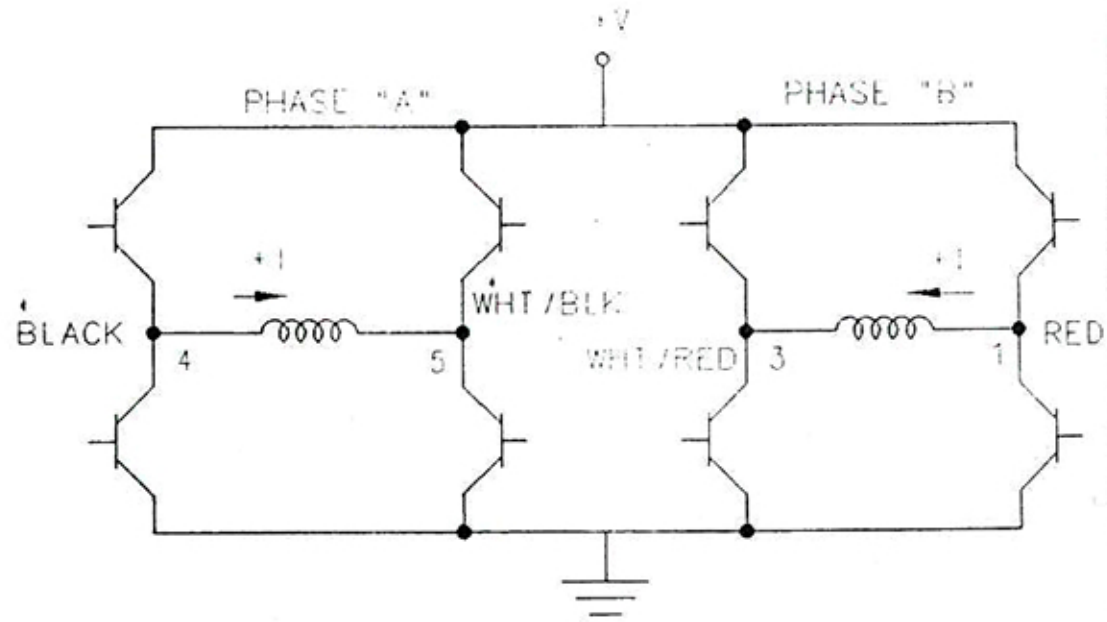


* ALTERNATE COLORS PHASE PHASE
 "A" GREEN FOR BLACK
 WHITE/GREEN FOR WHITE/BLACK
 FOR CW ROTATION AS VIEWED FROM
 NAMEPLATE, STEP IN ORDER SHOWN
 (1, 2, 3, 4, 1, ETC.)
 FOR CCW ROTATION, STEP IN
 IN REVERSE ORDER (1, 4, 3, 2, 1, ETC.)

FULL STEP (TWO PHASE ON) ENERGIZING SEQUENCE			HALF STEP PHASE ENERGIZING SEQUENCE			FULL STEP (ONE PHASE ON) ENERGIZING SEQUENCE		
PHASE			PHASE			PHASE		
STEP	A	B	STEP	A	B	STEP	A	B
1	+1	+1	1	+1	+1	1	+1	0
2	+1	-1	2	+1	0	2	0	-1
3	-1	-1	3	+1	-1	1	-1	0
4	-1	+1	4	0	-1	2	0	+1
1	+1	+1	5	-1	-1	1	-1	0
			6	-1	0	2	0	+1
			7	-1	+1	1	+1	0
			8	0	+1	2	0	+1
			1	+1	+1	1	+1	0



NOTES:
 1. COLORS GIVEN CORRESPOND TO LEAD COLORS.
 2. NUMBERS GIVEN CORRESPOND TO TERMINAL NUMBERS.
 3. CONNECTORS WHOSE PINS ARE MARKED WITH A,B,C,D CORRESPOND WITH 1,3,5,4.

50	50083	REV 1/2 STP PHS ENRGZ STP 1/PHSB WAS -1	PMH	01/28/02	AJN
C	77738-1	UPDATED TO NEW FORMAT.	SV	11-15-00	FJ
DWG REV	EC NUMBER	REVISION DESCRIPTION	DATE	APP'D	
PART REV AND DWG REV ARE CONTROLLED INDEPENDENTLY					

UNLESS OTHERWISE SPECIFIED
 DIMENSIONS ARE IN INCHES
 TOLERANCE ON

DECIMALS ANGLES
 XX = ±.02 ± 1'
 XXX = ±.005

MATERIAL

TITLE
**WIRING DIAGRAM
 SWITCHING
 SEQUENCE**

DRAWN SK DATE 11-19-84
 APP'D DATE

**Danaher MOTION
 Superior
 Electric**

SIZE A 213803

CAT CODE 001130 SCALE NONE
 FSCM NO. SHEET 1 OF 1